



ELECTRONIC COPY

LABORATORY GROWN DIAMOND REPORT

LG722577114
Report verification at igi.org

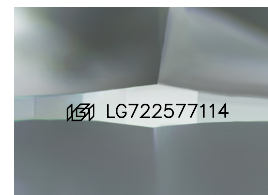
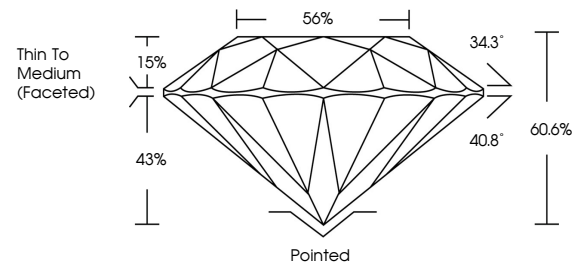
July 17, 2025	
IGI Report Number	LG722577114
Description	LABORATORY GROWN DIAMOND
Shape and Cutting Style	ROUND BRILLIANT
Measurements	9.18 - 9.24 X 5.58 MM
GRADING RESULTS	
Carat Weight	2.85 CARATS
Color Grade	E
Clarity Grade	VVS 2
Cut Grade	IDEAL

ADDITIONAL GRADING INFORMATION

Polish	EXCELLENT
Symmetry	EXCELLENT
Fluorescence	NONE
Inscription(s)	 LG722577114

Comments: This Laboratory Grown Diamond was created by Chemical Vapor Deposition (CVD) growth process.
Type IIa

PROPORTIONS



Sample Image Used

COLOR

D E F G H I J Faint Very Light Light

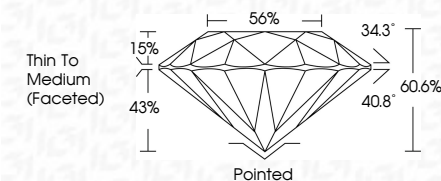
CLARITY

IF	VS ¹⁻²	VS ¹⁻²	SI ¹⁻²	I ¹⁻³
Internally Flawless	Very Very Slightly Included	Very Slightly Included	Slightly Included	Included

LABORATORY GROWN DIAMOND REPORT



July 17, 2025	
IGI Report Number	LG722577114
Description	LABORATORY GROWN DIAMOND
Shape and Cutting Style	ROUND BRILLIANT
Measurements	9.18 - 9.24 X 5.58 MM
GRADING RESULTS	
Carat Weight	2.85 CARATS
Color Grade	E
Clarity Grade	VVS 2
Cut Grade	IDEAL



ADDITIONAL GRADING INFORMATION

Polish	EXCELLENT
Symmetry	EXCELLENT
Fluorescence	NONE
Inscription(s)	 LG722577114
<p>Comments: This Laboratory Grown Diamond was created by Chemical Vapor Deposition (CVD) growth process.</p> <p>Type IIa</p>	



© IGI 2020, International Gemological Institute

FD - 10 20



THIS DOCUMENT WAS PRODUCED WITH THE FOLLOWING SECURITY MEASURES: SPECIAL DOCUMENT PAPER, INK SCREENS, WATERMARK, BACKGROUND DESIGNS, HOLOGRAM AND OTHER SECURITY FEATURES NOT LISTED AND DO EXCEED DOCUMENT SECURITY INDUSTRY GUIDELINES

www.igi.org

July 17, 2025

July 17, 2023
 IGI Report No LG72
 RYOND BRILLIANT

ROUND BRILLIANT
9.18 - 9.24 X 5.58 MM

2.18 - 9.24 X 5.58 MM
Carat Weight 2.85 CARATS

Color Grade

Clarity Grade	WS2
Out Grade	IDEAL

Cut Grade	IDEAL
Depth	60.6%

Table	56%
-------	-----

Girdle	Thin To Medium (Faceted)

	Culet	Pointed
(1 above)		

Polish	EXCELLENT
Curel	FULLY MET

Symmetry	EXCELLENT
Ellipticity	NONE

Fluorescence	NONE
Inscription(s)	151 LG72577114

Comments:

Comments:
This Laboratory Grown Diamond was created by Chemical Vapor Deposition

Created by Chemical Vapor Deposition (CVD) growth process.
Type IIa

Type IIa