



ELECTRONIC COPY

LABORATORY GROWN DIAMOND REPORT

July 18, 2025	
IGI Report Number	LG722579489
Description	LABORATORY GROWN DIAMOND
Shape and Cutting Style	ROUND BRILLIANT
Measurements	9.48 - 9.52 X 5.91 MM

GRADING RESULTS

Carat Weight	3.30 CARATS
Color Grade	D
Clarity Grade	VVS 1
Cut Grade	IDEAL

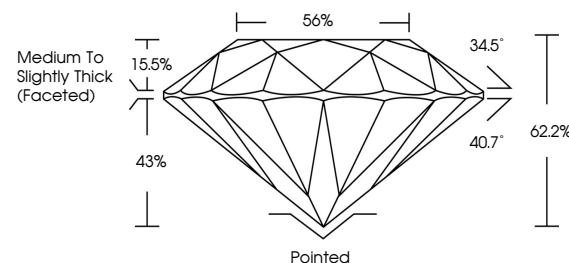
ADDITIONAL GRADING INFORMATION

Polish	EXCELLENT
Symmetry	EXCELLENT
Fluorescence	NONE
Inscription(s)	15 LG722579489

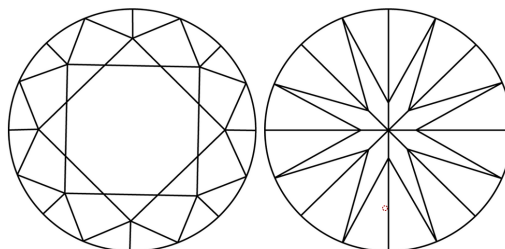
Comments: HEARTS & ARROWS
As Grown - No indication of post-growth treatment.
This Laboratory Grown Diamond was created by High
Pressure High Temperature (HPHT) growth process.
Type II

LG722579489
Report verification at igi.org

PROPORTIONS

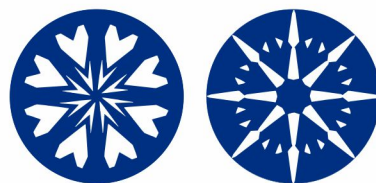


CLARITY CHARACTERISTICS

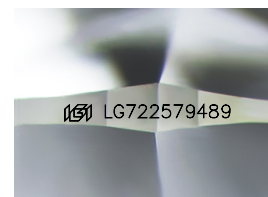


KEY TO SYMBOLS

Red symbols indicate internal characteristics.
Green symbols indicate external characteristics.



www.igi.org



Sample Image Used

COLOR

D E F G H I J Faint Very Light Light

CLARITY

IF WS¹⁻² VS¹⁻² SI¹⁻² |¹⁻³

Internally Flawless	Very Very Slightly Included	Very Slightly Included	Slightly Included	Included
------------------------	--------------------------------	---------------------------	----------------------	----------



© IGI 2020, International Gemological Institute

FD - 10 20

THIS DOCUMENT WAS PRODUCED WITH THE FOLLOWING SECURITY MEASURES: SPECIAL DOCUMENT PAPER, INK SCREENS, WATERMARK, BACKGROUND DESIGNS, HOLOGRAM AND OTHER SECURITY FEATURES NOT LISTED AND DO EXCEED DOCUMENT SECURITY INDUSTRY GUIDELINE

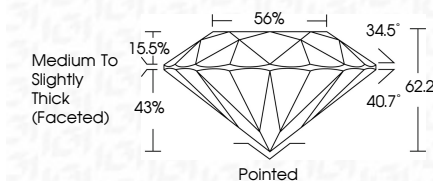
LABORATORY GROWN DIAMOND REPORT



July 18, 2025	
IGI Report Number	LG722579489
Description	LABORATORY GROWN DIAMOND
Shape and Cutting Style	ROUND BRILLIANT
Measurements	9.48 - 9.52 X 5.91 MM

GRADING RESULTS

Carat Weight	3.30 CARATS
Color Grade	D
Clarity Grade	VVS 1
Cut Grade	IDEAL



ADDITIONAL GRADING INFORMATION

Polish	EXCELLENT
Symmetry	EXCELLENT
Fluorescence	NONE
Inscription(s)	(16) LG722579489

Comments: HEARTS & ARROWS
As Grown - No indication of post-growth treatment.
This Laboratory Grown Diamond was created by High
Pressure High Temperature (HPHT) growth process.
Type II



July 18, 2025
GI Report No LG72579489
ROUND BRILLIANT

4.48 - 9.52 X 5.91 MM	3.30 CARATS	D
Carat Weight	VVS 1	Polished
Color Grade	IDEAL	EXCELLENT
Clarity Grade	62-75	EXCELLENT
Cut Grade	56%	NONE
Depth	Medium to Slightly Thick (Faceted)	
Table		
Grade		
Culet		
Polish		
Symmetry		
Fluorescence		

Comments:
HEARTS & ARROWS
As Grown - No Indication of post-growth
treatment.
This Laboratory Grown Diamond was
created by High Pressure High
temperature (HPHT) growth process.