

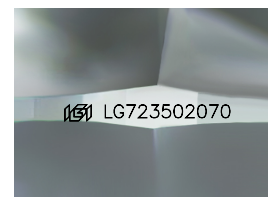
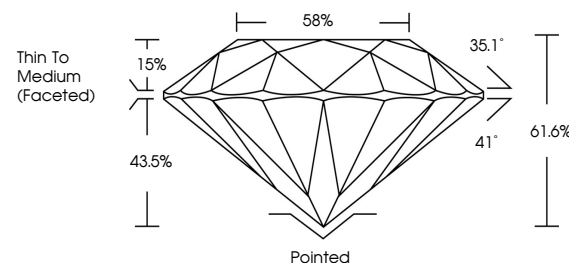


**ELECTRONIC COPY**

## LABORATORY GROWN DIAMOND REPORT

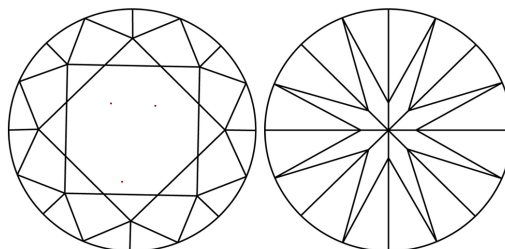
LG723502070  
Report verification at [igi.org](https://igi.org)

## PROPORTIONS



Sample Image Used

## CLARITY CHARACTERISTICS



### KEY TO SYMBOLS

Red symbols indicate internal characteristics.  
Green symbols indicate external characteristics.

## COLOR

D E F G H I J Faint Very Light Light

## CLARITY

IF WS<sup>1-2</sup> VS<sup>1-2</sup> SI<sup>1-2</sup> |<sup>1-3</sup>

Internally Flawless	Very Very Slightly Included	Very Slightly Included	Slightly Included	Included
------------------------	--------------------------------	---------------------------	----------------------	----------



July 21, 2025

IGI Report Number **LG723502070**Description **LABORATORY GROWN DIAMOND**Shape and Cutting Style **ROUND BRILLIANT**

Measurements 9.29 - 9.32 X 5.73 MM

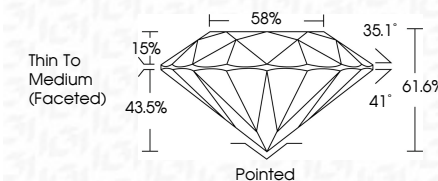
## GRADING RESULTS

Carat Weight **3.03 CARATS**

Color Grade E

Clarity Grade VVS 2

Cut Grade **IDEAL**



### ADDITIONAL GRADING INFORMATION

Polish **EXCELLEN**Symmetry **EXCELLENCE**Fluorescence NONIInscription(s)  LG723502070

Comments: This Laboratory Grown Diamond was created by Chemical Vapor Deposition (CVD) growth process.  
Type IIa



© IGI 2020, International Gemological Institute

FD - 10 20

**www.igi.org**



THIS DOCUMENT WAS PRODUCED WITH THE FOLLOWING SECURITY MEASURES: SPECIAL DOCUMENT PAPER, INK SCREENS, WATERMARK, BACKGROUND DESIGNS, HOLOGRAM AND OTHER SECURITY FEATURES NOT LISTED AND DO EXCEED DOCUMENT SECURITY INDUSTRY GUIDELINES

July 21, 2025  
GI Report No LG723502070  
ROUND BRILLIANT

2.29 - 9.32 X 5.73 MM	3.03 CARATS	
Carat Weight	VVS 2	Pointed
Color Grade	IDEAL	EXCELLENT
Clarity Grade	61.05%	EXCELLENT
Cut Grade	58%	NONE
Depth	Thin To Medium	
Table	(Faceted)	
Grade		
Culet		
Polish		
Symmetry		
Fluorescence		

**Comments:**  
This Laboratory Grown Diamond was  
created by Chemical Vapor Deposition  
(CVD) growth process.