



ELECTRONIC COPY

LABORATORY GROWN DIAMOND REPORT

LG723503120
Report verification at igi.org

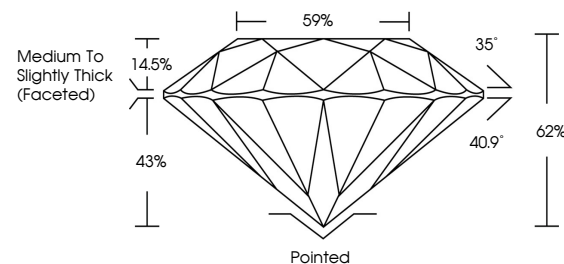
July 18, 2025	
IGI Report Number	LG723503120
Description	LABORATORY GROWN DIAMOND
Shape and Cutting Style	ROUND BRILLIANT
Measurements	6.55 - 6.60 X 4.07 MM
GRADING RESULTS	
Carat Weight	1.09 CARAT
Color Grade	E
Clarity Grade	INTERNALLY FLAWLESS
Cut Grade	IDEAL

ADDITIONAL GRADING INFORMATION

Polish	EXCELLENT
Symmetry	EXCELLENT
Fluorescence	NONE
Inscription(s)	131 LG723503120

Comments: As Grown - No indication of post-growth treatment.
This Laboratory Grown Diamond was created by High Pressure High Temperature (HPHT) growth process.
Type II

PROPORTIONS



Sample Image Used

COLOR

D E F G H I J Faint Very Light Light

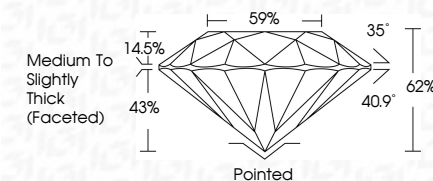
CLARITY

IF	VS ¹⁻²	VS ¹⁻²	SI ¹⁻²	I ¹⁻³
Internally Flawless	Very Very Slightly Included	Very Slightly Included	Slightly Included	Included

LABORATORY GROWN DIAMOND REPORT



July 18, 2025	
IGI Report Number	LG723503120
Description	LABORATORY GROWN DIAMOND
Shape and Cutting Style	ROUND BRILLIANT
Measurements	6.55 - 6.60 X 4.07 MM
GRADING RESULTS	
Carat Weight	1.09 CARAT
Color Grade	E
Clarity Grade	INTERNALLY FLAWLESS
Cut Grade	IDEAL



ADDITIONAL GRADING INFORMATION

Polish	EXCELLENT
Symmetry	EXCELLENT
Fluorescence	NONE
Inscription(s)	(G) LG723503120
<p>Comments: As Grown - No indication of post-growth treatment.</p> <p>This Laboratory Grown Diamond was created by High Pressure High Temperature (HPHT) growth process.</p> <p>Type II</p>	



© IGI 2020, International Gemological Institute

FD - 10 20



THIS DOCUMENT WAS PRODUCED WITH THE FOLLOWING SECURITY MEASURES: SPECIAL DOCUMENT PAPER, INK SCREENS, WATERMARK, BACKGROUND DESIGNS, HOLOGRAM, AND OTHER SECURITY FEATURES NOT LISTED AND DO EXCEED DOCUMENT SECURITY INDUSTRY GUIDELINES.

www.igi.org

July 18, 2025
GJ Report No | G723503120

IGI Report No LG72
 POUND BRILLIANT

\$555 - 6.60 X 4.07 MM

5.55 - 6.60 X 4.0 / MM
Carat Weight 1.09 CARAT

Color Grade E

Clarity Grade	I.F.
FL	0.00
IF	0.01-0.03
VS1	0.04-0.06
VS2	0.07-0.09
SI1	0.10-0.12
SI2	0.13-0.15
I1	0.16-0.18
I2	0.19-0.21
I3	0.22-0.24
I4	0.25-0.27
I5	0.28-0.30
I6	0.31-0.33
I7	0.34-0.36
I8	0.37-0.39
I9	0.40-0.42
I10	0.43-0.45
I11	0.46-0.48
I12	0.49-0.51
I13	0.52-0.54
I14	0.55-0.57
I15	0.58-0.60
I16	0.61-0.63
I17	0.64-0.66
I18	0.67-0.69
I19	0.70-0.72
I20	0.73-0.75
I21	0.76-0.78
I22	0.79-0.81
I23	0.82-0.84
I24	0.85-0.87
I25	0.88-0.90
I26	0.91-0.93
I27	0.94-0.96
I28	0.97-0.99
I29	1.00-1.02
I30	1.03-1.05
I31	1.06-1.08
I32	1.09-1.11
I33	1.12-1.14
I34	1.15-1.17
I35	1.18-1.20
I36	1.21-1.23
I37	1.24-1.26
I38	1.27-1.29
I39	1.30-1.32
I40	1.33-1.35
I41	1.36-1.38
I42	1.39-1.41
I43	1.42-1.44
I44	1.45-1.47
I45	1.48-1.50
I46	1.51-1.53
I47	1.54-1.56
I48	1.57-1.59
I49	1.60-1.62
I50	1.63-1.65
I51	1.66-1.68
I52	1.69-1.71
I53	1.72-1.74
I54	1.75-1.77
I55	1.78-1.80
I56	1.81-1.83
I57	1.84-1.86
I58	1.87-1.89
I59	1.90-1.92
I60	1.93-1.95
I61	1.96-1.98
I62	1.99-2.01
I63	2.02-2.04
I64	2.05-2.07
I65	2.08-2.10
I66	2.11-2.13
I67	2.14-2.16
I68	2.17-2.19
I69	2.20-2.22
I70	2.23-2.25
I71	2.26-2.28
I72	2.29-2.31
I73	2.32-2.34
I74	2.35-2.37
I75	2.38-2.40
I76	2.41-2.43
I77	2.44-2.46
I78	2.47-2.49
I79	2.50-2.52
I80	2.53-2.55
I81	2.56-2.58
I82	2.59-2.61
I83	2.62-2.64
I84	2.65-2.67
I85	2.68-2.70
I86	2.71-2.73
I87	2.74-2.76
I88	2.77-2.79
I89	2.80-2.82
I90	2.83-2.85
I91	2.86-2.88
I92	2.89-2.91
I93	2.92-2.94
I94	2.95-2.97
I95	2.98-3.00
I96	3.01-3.03
I97	3.04-3.06
I98	3.07-3.09
I99	3.10-3.12
I100	3.13-3.15
I101	3.16-3.18
I102	3.19-3.21
I103	3.22-3.24
I104	3.25-3.27
I105	3.28-3.30
I106	3.31-3.33
I107	3.34-3.36
I108	3.37-3.39
I109	3.40-3.42
I110	3.43-3.45
I111	3.46-3.48
I112	3.49-3.51
I113	3.52-3.54
I114	3.55-3.57
I115	3.58-3.60
I116	3.61-3.63
I117	3.64-3.66
I118	3.67-3.69
I119	3.70-3.72
I120	3.73-3.75
I121	3.76-3.78
I122	3.79-3.81
I123	3.82-3.84
I124	3.85-3.87
I125	3.88-3.90
I126	3.91-3.93
I127	3.94-3.96
I128	3.97-3.99
I129	4.00-4.02</

Depth	Cut Grade	IDEAL	60%
-------	-----------	-------	-----

Depth	62%
Table	59%

Girdle

Thick (Faceted)

Culet	Pointed
Polish	EXCELLENT

Symmetry

Fluorescence	None
Insulation(s)	161 G728503120

DESCRIPTION (3)

197 207 23000 120

Comments:
As Grown - No Indication of post-growth

treatment.
This Laboratory Grown Diamond was

Created by High Pressure High Temperature (HPHT) growth process.

Type II