



ELECTRONIC COPY

LABORATORY GROWN DIAMOND REPORT

LG723511582
Report verification at igi.org

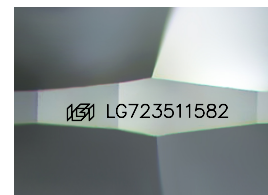
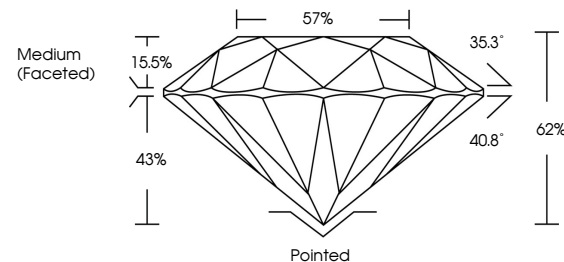
July 17, 2025	
IGI Report Number	LG723511582
Description	LABORATORY GROWN DIAMOND
Shape and Cutting Style	ROUND BRILLIANT
Measurements	8.15 - 8.21 X 5.07 MM
GRADING RESULTS	
Carat Weight	2.08 CARATS
Color Grade	D
Clarity Grade	INTERNALLY FLAWLESS
Cut Grade	IDEAL

ADDITIONAL GRADING INFORMATION

Polish	EXCELLENT
Symmetry	EXCELLENT
Fluorescence	NONE
Inscription(s)	 LG723511582

Comments: As Grown - No indication of post-growth treatment.
This Laboratory Grown Diamond was created by High Pressure High Temperature (HPHT) growth process.
Type II

PROPORTIONS



Sample Image Used

COLOR

D E F G H I J Faint Very Light Light

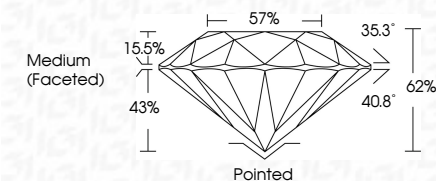
CLARITY

IF	VVS ¹⁻²	VS ¹⁻²	SI ¹⁻²	I ¹⁻³
Internally Flawless	Very Very Slightly Included	Very Slightly Included	Slightly Included	Included

LABORATORY GROWN DIAMOND REPORT



July 17, 2025	
IGI Report Number	LG723511582
Description	LABORATORY GROWN DIAMOND
Shape and Cutting Style	ROUND BRILLIANT
Measurements	8.15 - 8.21 X 5.07 MM
GRADING RESULTS	
Carat Weight	2.08 CARATS
Color Grade	D
Clarity Grade	INTERNALLY FLAWLESS
Cut Grade	IDEAL



ADDITIONAL GRADING INFORMATION

Polish	EXCELLENT
Symmetry	EXCELLENT
Fluorescence	NONE
Inscription(s)	(G) LG723511582
Comments: As Grown - No indication of post-growth treatment.	
This Laboratory Grown Diamond was created by High Pressure High Temperature (HPHT) growth process.	
Type II	



© IGI 2020, International Gemological Institute

FD - 10 20



THIS DOCUMENT WAS PRODUCED WITH THE FOLLOWING SECURITY MEASURES: SPECIAL DOCUMENT PAPER, INK SCREENS, WATERMARK, BACKGROUND DESIGNS, HOLOGRAM, AND OTHER SECURITY FEATURES NOT LISTED AND DO EXCEED DOCUMENT SECURITY INDUSTRY GUIDELINES.

www.igi.org

July 17, 2025
GJ Report No | G723511582

IGI Report No LG72
POUND BRILLIANT

9 15 - 9 21 V 5 07 MM

Carat Weight 2.08 CARATS

D
Color Grade

Clarity Grade	I.F.
FL	FL
IF	IF
VS1	VS1
VS2	VS2
VVS1	VVS1
VVS2	VVS2
SI1	SI1
SI2	SI2
S1	S1
S2	S2
I1	I1
I2	I2
I3	I3
P1	P1
P2	P2
P3	P3

Out Grade	IDEAL
Depth	62%

Table 57%

Girdle

Cities	Dated
Albuquerque	1980
Anchorage	1976
Baltimore	1976
Boston	1976
Boulder	1976
Butte	1976
Chattanooga	1976
Chicago	1976
Cincinnati	1976
Cleveland	1976
Columbus	1976
Dayton	1976
Denver	1976
Des Moines	1976
Detroit	1976
El Paso	1976
Houston	1976
Kansas City	1976
Louisville	1976
Maryland Heights	1976
Memphis	1976
Minneapolis	1976
Missouri Springs	1976
New Orleans	1976
New York	1976
Oak Ridge	1976
Oklahoma City	1976
Omaha	1976
Philadelphia	1976
Pittsburgh	1976
Reno	1976
Salt Lake City	1976
San Antonio	1976
San Diego	1976
Seattle	1976
St. Louis	1976
Tampa	1976
Vancouver	1976
Wash. D.C.	1976
Yonkers	1976

Polished	Polish
Excellent	

Symmetry

Fluorescence	NONE
Inscription(s)	151 LG723511582

Comments:
As Grown - No Indication of post-growth

This Laboratory Grown Diamond was

created by High Pressure High Temperature (HPHT) growth process.

type II