



ELECTRONIC COPY

LABORATORY GROWN DIAMOND REPORT

LG723525684
Report verification at igi.org

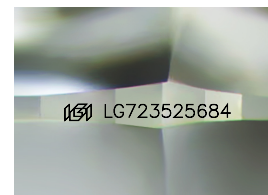
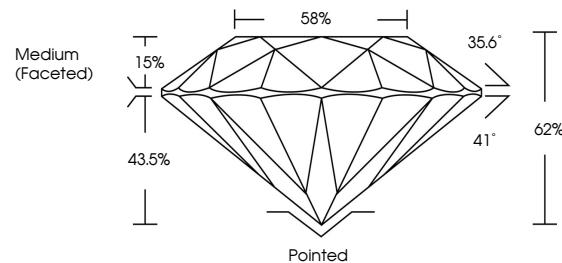
July 16, 2025	
IGI Report Number	LG723525684
Description	LABORATORY GROWN DIAMOND
Shape and Cutting Style	ROUND BRILLIANT
Measurements	7.79 - 7.83 X 4.84 MM
GRADING RESULTS	
Carat Weight	1.82 CARAT
Color Grade	E
Clarity Grade	VS 1
Cut Grade	IDEAL

ADDITIONAL GRADING INFORMATION

Polish	EXCELLENT
Symmetry	EXCELLENT
Fluorescence	NONE
Inscription(s)	 LG723525684

Comments: This Laboratory Grown Diamond was created by Chemical Vapor Deposition (CVD) growth process.
Type IIa

PROPORTIONS



Sample Image Used

COLOR

D E F G H I J Faint Very Light Light

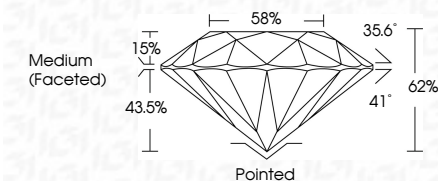
CLARITY

IF	VS ¹⁻²	VS ¹⁻²	SI ¹⁻²	I ¹⁻³
Internally Flawless	Very Very Slightly Included	Very Slightly Included	Slightly Included	Included

LABORATORY GROWN DIAMOND REPORT



July 16, 2025	
IGI Report Number	LG723525684
Description	LABORATORY GROWN DIAMOND
Shape and Cutting Style	ROUND BRILLIANT
Measurements	7.79 - 7.83 X 4.84 MM
GRADING RESULTS	
Carat Weight	1.82 CARAT
Color Grade	E
Clarity Grade	VS 1
Cut Grade	IDEAL



ADDITIONAL GRADING INFORMATION

Polish	EXCELLENT
Symmetry	EXCELLENT
Fluorescence	NONE
Inscription(s)	 LG723525684
<p>Comments: This Laboratory Grown Diamond was created by Chemical Vapor Deposition (CVD) growth process.</p> <p>Type IIa</p>	



© IGI 2020, International Gemological Institute

FD - 10 20



THIS DOCUMENT WAS PRODUCED WITH THE FOLLOWING SECURITY MEASURES: SPECIAL DOCUMENT PAPER, INK SCREENS, WATERMARK, BACKGROUND DESIGNS, HOLOGRAM AND OTHER SECURITY FEATURES NOT LISTED AND DO EXCEED DOCUMENT SECURITY INDUSTRY GUIDELINES

www.igi.org

July 16, 2025
GJ Report No | G723525684

IGI Report No LG72
DOING BRILLIANT

7.79 - 7.83 X 4.84 MM

7.79 - 7.83 X 4.84 MM
Carat Weight
1.82 CARAT

Color Grade

Clarity Grade	VS 1
---------------	------

Depth	Cut Grade	IDEAL	60%
-------	-----------	-------	-----

Depth	62%
Table	58%

Girdle

1

Culet	Pointed
Polish	EXCELLENT

Symmetry

Fluorescence	None
1681 G729325684	

00000007 15/10/94

Comments:
This Laboratory Grown Diamond was

created by Chemical Vapor Deposition (CVD) growth process.

Type IIa