

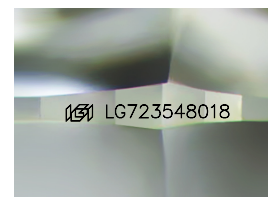
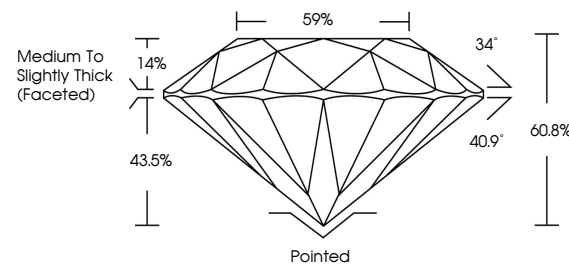


ELECTRONIC COPY

LABORATORY GROWN DIAMOND REPORT

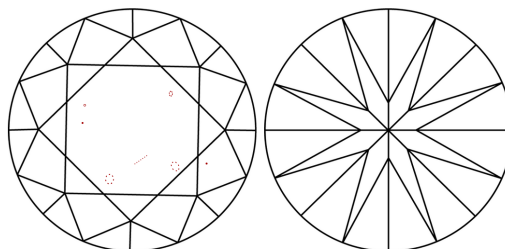
LG723548018
Report verification at igi.org

PROPORTIONS



Sample Image Used

CLARITY CHARACTERISTICS



KEY TO SYMBOLS

Red symbols indicate internal characteristics.
Green symbols indicate external characteristics.

COLOR

D E F G H I J Faint Very Light Light

CLARITY

IF WS¹⁻² VS¹⁻² SI¹⁻² |¹⁻³

Internally Flawless	Very Very Slightly Included	Very Slightly Included	Slightly Included	Included
------------------------	--------------------------------	---------------------------	----------------------	----------

LABORATORY GROWN DIAMOND REPORT



July 22, 2025

IGI Report Number **LG723548018**

Description	LABORATORY GROWN DIAMOND
-------------	--------------------------

Shape and Cutting Style **ROUND BRILLIANT**

Measurements 8.19 - 8.22 X 4.99 MM

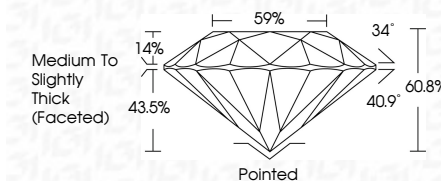
GRADING RESULTS

Carat Weight **2.05 CARATS**

Color Grade E

Clarity Grade VS 1

Cut Grade **IDEAL**



ADDITIONAL GRADING INFORMATION

Polish **EXCELLENT**Symmetry **EXCELLENT**

Fluorescence NON

Inscription(s) LG723548018

Comments: This Laboratory Grown Diamond was created by Chemical Vapor Deposition (CVD) growth process.

Type IIa



www.igi.org

© IGI 2020, International Gemological Institute

FD - 10 20



THIS DOCUMENT WAS PRODUCED WITH THE FOLLOWING SECURITY MEASURES: SPECIAL DOCUMENT PAPER, INK SCREENS, WATERMARK, BACKGROUND DESIGNS, HOLOGRAM AND OTHER SECURITY FEATURES NOT LISTED AND DO EXCEED DOCUMENT SECURITY INDUSTRY GUIDELINE

July 22, 2025	2.05 CARATS	
GI Report No LG73548018	E	
ROUND BRILLANT	VS 1	
	IDEAL	
	60.8%	
	59%	
	Medium to Slightly Thick (Faceted)	
	Polished	
	EXCELLENT	
	SYMMETRY	
	FLUORESCENCE	
	INSCRIPTION(S)	
	NONE	
	J69 LG73548018	

Comments:
 The Laboratory Grown Diamond was
 created using the Chemical Vapor Deposition
 (CVD) growth process.
 Type IIG