

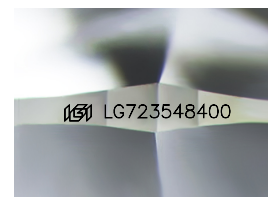
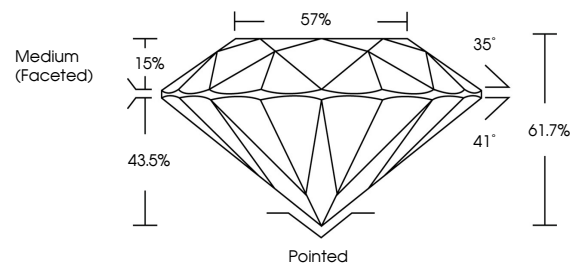


**ELECTRONIC COPY**

## LABORATORY GROWN DIAMOND REPORT

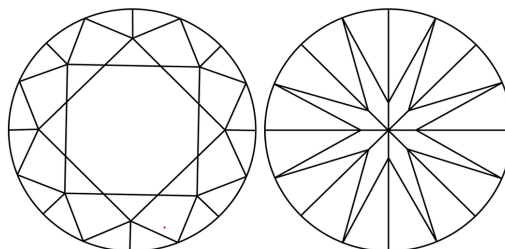
LG723548400  
Report verification at [igi.org](https://igi.org)

## PROPORTIONS



Sample Image Used

## CLARITY CHARACTERISTICS



### KEY TO SYMBOLS

Red symbols indicate internal characteristics.  
Green symbols indicate external characteristics.

## COLOR

D E F G H I J Faint Very Light Light

## CLARITY

IF WS<sup>1-2</sup> VS<sup>1-2</sup> SI<sup>1-2</sup> |<sup>1-3</sup>

Internally Flawless	Very Very Slightly Included	Very Slightly Included	Slightly Included	Included
------------------------	--------------------------------	---------------------------	----------------------	----------

## LABORATORY GROWN DIAMOND REPORT



July 22, 2025

IGI Report Number **LG723548400**Description **LABORATORY GROWN DIAMOND**Shape and Cutting Style **ROUND BRILLIANT**

Measurements 9.29 - 9.33 X 5.74 MM

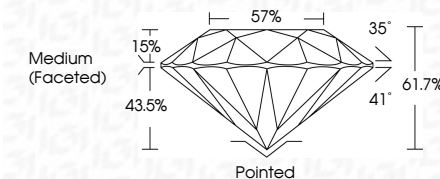
## GRADING RESULTS

Carat Weight **3.03 CARATS**

Color Grade E

Clarity Grade **VVS 2**

Cut Grade **IDEAL**



### ADDITIONAL GRADING INFORMATION

Polish **EXCELLENT**Symmetry **EXCELLENT**Fluorescence **NONE**Inscription(s)  LG723548400

Comments: This Laboratory Grown Diamond was created by Chemical Vapor Deposition (CVD) growth process.

Type IIa



JULY 22, 2025 GI Report No. L723546400 ROUND BRILLIANT	3.03 CARATS E VS 2 IDEAL 61.7% 57% Medium (Faced)	Polished EXCELLENT EXCELLENT NONE #616728546400	Comments: This Laboratory Grown Diamond was created by Chemical Vapor Deposition (CVD) growth process. Type IIa
--	---	---	---

