



ELECTRONIC COPY

LABORATORY GROWN DIAMOND REPORT

LG723560667
Report verification at igi.org

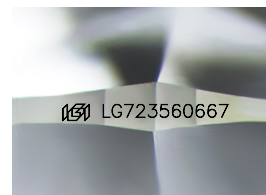
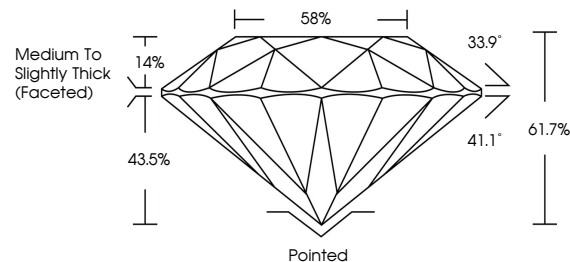
July 22, 2025	
IGI Report Number	LG723560667
Description	LABORATORY GROWN DIAMOND
Shape and Cutting Style	ROUND BRILLIANT
Measurements	6.40 - 6.44 X 3.96 MM
GRADING RESULTS	
Carat Weight	1.01 CARAT
Color Grade	E
Clarity Grade	VS 1
Cut Grade	IDEAL

ADDITIONAL GRADING INFORMATION

Polish	EXCELLENT
Symmetry	EXCELLENT
Fluorescence	NONE
Inscription(s)	 LG723560667

Comments: This Laboratory Grown Diamond was created by Chemical Vapor Deposition (CVD) growth process.
Type IIa

PROPORTIONS



Sample Image Used

COLOR

D E F G H I J Faint Very Light Light

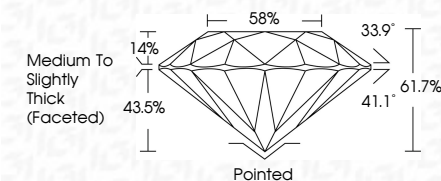
CLARITY

IF	VS ¹⁻²	VS ¹⁻²	SI ¹⁻²	I ¹⁻³
Internally Flawless	Very Very Slightly Included	Very Slightly Included	Slightly Included	Included

LABORATORY GROWN DIAMOND REPORT



July 22, 2025	
IGI Report Number	LG723560667
Description	LABORATORY GROWN DIAMOND
Shape and Cutting Style	ROUND BRILLIANT
Measurements	6.40 - 6.44 X 3.96 MM
GRADING RESULTS	
Carat Weight	1.01 CARAT
Color Grade	E
Clarity Grade	VS 1
Cut Grade	IDEAL



ADDITIONAL GRADING INFORMATION

Polish	EXCELLENT
Symmetry	EXCELLENT
Fluorescence	NONE
Inscription(s)	 LG723560667
Comments: This Laboratory Grown Diamond was created by Chemical Vapor Deposition (CVD) growth process.	
Type IIa	



© IGI 2020, International Gemological Institute

FD - 10 20

www.igi.org



THIS DOCUMENT WAS PRODUCED WITH THE FOLLOWING SECURITY MEASURES: SPECIAL DOCUMENT PAPER, INK SCREENS, WATERMARK, BACKGROUND DESIGNS, HOLOGRAM AND OTHER SECURITY FEATURES NOT LISTED AND DO EXCEED DOCUMENT SECURITY INDUSTRY GUIDELINES

July 22, 2025
IGI Report No. IG723560667

IGI Report No LG72
 BOY AND BRILLIANT

6.40 - 6.44 X 3.96 MM

0.40 - 0.44 X 3.90 MM	1.01 CARAT
Carat Weight	

Color Grade **E**

	VS 1	IDEAL
Clarity Grade		
Cut Grade		

Depth 61.7%

	58%
Table	
Girdle	

Thick (Faceted)

Culet	Pointed
Polish	Excellent

EXCELLENT

EXCELLENT

Symmetry

Fluorescence	Insrtion(s)	None
		1681 G729560667

00000000000000000000

Comments:
This Laboratory Grown Diamond was
created by: Chemical Vapor Deposition

Created by Chemical Vapor Deposition
(CVD) growth process.
Type IIa

Types