



ELECTRONIC COPY

LABORATORY GROWN DIAMOND REPORT

LG723581292
Report verification at igi.org

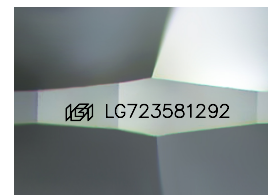
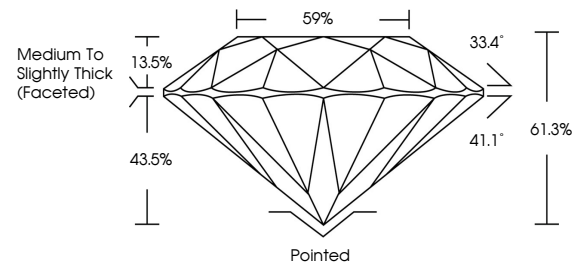
| | |
|-------------------------|--------------------------|
| July 22, 2025 | |
| IGI Report Number | LG723581292 |
| Description | LABORATORY GROWN DIAMOND |
| Shape and Cutting Style | ROUND BRILLIANT |
| Measurements | 7.64 - 7.70 X 4.71 MM |
| GRADING RESULTS | |
| Carat Weight | 1.71 CARAT |
| Color Grade | D |
| Clarity Grade | VVS 1 |
| Cut Grade | IDEAL |

ADDITIONAL GRADING INFORMATION

| | |
|----------------|----------------|
| Polish | EXCELLENT |
| Symmetry | EXCELLENT |
| Fluorescence | NONE |
| Inscription(s) | 15 LG723581292 |

Comments: As Grown - No indication of post-growth treatment.
This Laboratory Grown Diamond was created by High Pressure High Temperature (HPHT) growth process.
Type II

PROPORTIONS



Sample Image Used

COLOR

D E F G H I J Faint Very Light Light

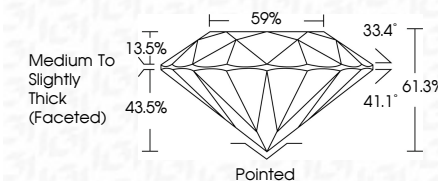
CLARITY

| IF | VVS ¹⁻² | VS ¹⁻² | SI ¹⁻² | I ¹⁻³ |
|---------------------|-----------------------------|------------------------|-------------------|------------------|
| Internally Flawless | Very Very Slightly Included | Very Slightly Included | Slightly Included | Included |


LABORATORY GROWN DIAMOND REPORT



| | |
|-------------------------|--------------------------|
| July 22, 2025 | |
| IGI Report Number | LG723581292 |
| Description | LABORATORY GROWN DIAMOND |
| Shape and Cutting Style | ROUND BRILLIANT |
| Measurements | 7.64 - 7.70 X 4.71 MM |
| GRADING RESULTS | |
| Carat Weight | 1.17 CARAT |
| Color Grade | D |
| Clarity Grade | VVS1 |
| Cut Grade | IDEAL |



ADDITIONAL GRADING INFORMATION

| | |
|--|---|
| Polish | EXCELLENT |
| Symmetry | EXCELLENT |
| Fluorescence | NONE |
| Inscription(s) |  LG723581292 |
| <p>Comments: As Grown - No indication of post-growth treatment.</p> <p>This Laboratory Grown Diamond was created by High Pressure High Temperature (HPHT) growth process.</p> <p>Type II</p> | |



© IGI 2020, International Gemological Institute

FD - 10 20



THIS DOCUMENT WAS PRODUCED WITH THE FOLLOWING SECURITY MEASURES: SPECIAL DOCUMENT PAPER, INK SCREENS, WATERMARK, BACKGROUND DESIGNS, HOLOGRAM AND OTHER SECURITY FEATURES NOT LISTED AND DO EXCEED DOCUMENT SECURITY INDUSTRY GUIDELINES

www.igi.org

July 22, 2025
GJ Report No | G72358 | 202

GI Report No LG722

ROUND BRILLIANT
7.64 - 7.70 X 4.71 MM

7.64 - 7.70 X 4.71 MM
1.71 CARAT
Carat Weight

Color Grade D

| Clarity Grade | WS 1 |
|---------------|------|
| Very Good | 100% |
| Good | 100% |
| Fair | 100% |
| Poor | 100% |
| Very Poor | 100% |

| Out Grade | IDEAL |
|-----------|-------|
| 41 98% | |

| | |
|-------|-------|
| Depth | 61.3% |
| Table | 59% |

Girdle

Thick (Faceted)

| | Culet | Pointed |
|-----------|-------|---------|
| EXCELLENT | | |
| Polish | | |

EXCELLENT

Symmetry

| Fluorescence | NONE |
|-----------------|-------------------|
| Subscription(s) | 1681 G729581202 |

15311010103

Comments:
As Grown - No Indication of post-growth

treatment.
This Laboratory Grown Diamond was

created by High Pressure High Temperature (HPHT) growth process.

Type II