

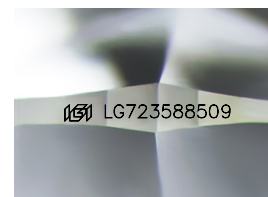
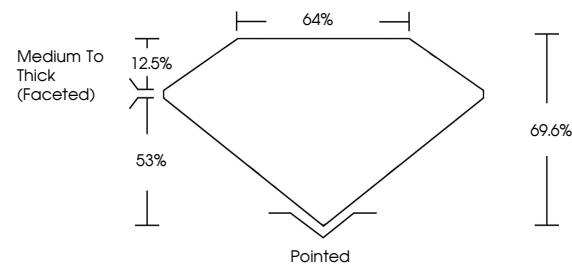


ELECTRONIC COPY

LABORATORY GROWN DIAMOND REPORT

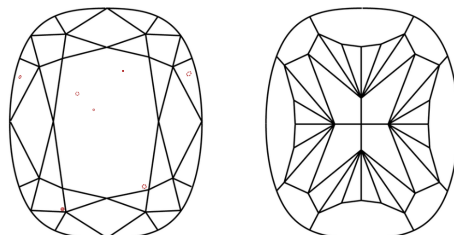
LG723588509
Report verification at igi.org

PROPORTIONS



Sample Image Used

CLARITY CHARACTERISTICS



KEY TO SYMBOLS

Red symbols indicate internal characteristics.
Green symbols indicate external characteristics.

COLOR

D E F G H I J Faint Very Light Light

CLARITY

| IF | VS ¹⁻² | VS ¹⁻² | SI ¹⁻² | I ¹⁻³ |
|---------------------|-----------------------------|------------------------|-------------------|------------------|
| Internally Flawless | Very Very Slightly Included | Very Slightly Included | Slightly Included | Included |

LABORATORY GROWN DIAMOND REPORT



July 25, 2025

IGI Report Number **LG723588509**Description **LABORATORY GROWN DIAMOND**

Shape and Cutting Style **CUSHION MODIFIED
BRILLIANT**

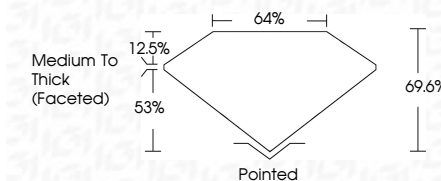
Measurements **6.69 X 5.17 X 3.60 MM**

GRADING RESULTS

Carat Weight 1.00 CARAT

Color Grade G

Clarity Grade VS 1



ADDITIONAL GRADING INFORMATION

Polish **EXCELLENT**Symmetry **EXCELLENT**Fluorescence **NONE**Inscription(s) LG723588509

Comments: This Laboratory Grown Diamond was created by Chemical Vapor Deposition (CVD) growth process.
Type IIa



© IGI 2020, International Gemological Institute

FD - 10 20



THIS DOCUMENT WAS PRODUCED WITH THE FOLLOWING SECURITY MEASURES: SPECIAL DOCUMENT PAPER, INK SCREENS, WATERMARK, BACKGROUND DESIGNS, HOLOGRAM, AND OTHER SECURITY FEATURES NOT LISTED AND DO EXCEED DOCUMENT SECURITY INDUSTRY GUIDELINES.

www.igi.org

July 25, 2025
GI Report No LG723588509
VISION MODIFIED BRILLIANT

| | | | | | | | | | | | |
|----------------------|--------------|-------------|---------------|-------|-------|--------------------------|---------|-----------|-----------|--------------|----------------|
| 669 X 5.17 X 3.60 MM | 1.00 CARAT | G | VS 1 | 66.6% | 64% | Medium to Thick (cassid) | Pointed | EXCELLENT | EXCELLENT | NONE | None (crossed) |
| | Carat Weight | Color Grade | Clarity Grade | Depth | Table | Girdle | Culet | Polish | Symmetry | Fluorescence | Fluorescence |

Comments:
This Laboratory Grown Diamond was created by Chemical Vapor Deposition (CVD) growth process.