

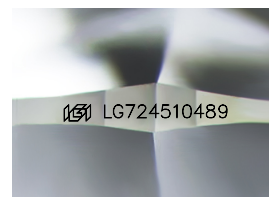
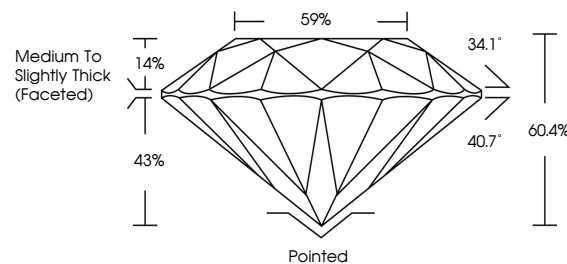


ELECTRONIC COPY

LABORATORY GROWN DIAMOND REPORT

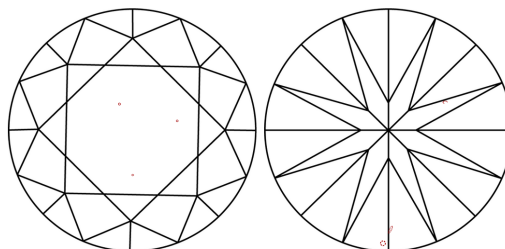
LG724510489
Report verification at igi.org

PROPORTIONS



Sample Image Used

CLARITY CHARACTERISTICS



KEY TO SYMBOLS

Red symbols indicate internal characteristics.
Green symbols indicate external characteristics.

COLOR

D E F G H I J Faint Very Light Light

CLARITY

IF WS¹⁻² VS¹⁻² SI¹⁻² |¹⁻³

Internally Flawless	Very Very Slightly Included	Very Slightly Included	Slightly Included	Included
------------------------	--------------------------------	---------------------------	----------------------	----------



July 28, 2025

IGI Report Number **LG724510489**

Description	LABORATORY GROWN DIAMOND
-------------	--------------------------

Shape and Cutting Style **ROUND BRILLIANT**

Measurements	8.11 - 8.16 X 4.91 MM
--------------	-----------------------

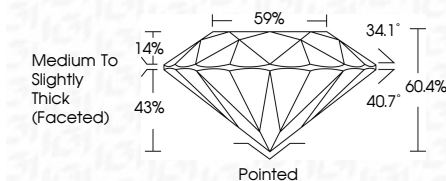
GRADING RESULTS

Carat Weight **2.01 CARATS**

Color Grade E

Clarity Grade VS 1

Cut Grade **IDEAL**



ADDITIONAL GRADING INFORMATION

Polish **EXCELLENT**Symmetry **EXCELLENT**Fluorescence **NONE**Inscription(s) LG724510489

Comments: This Laboratory Grown Diamond was created by Chemical Vapor Deposition (CVD) growth process.
Type IIa



© IGI 2020, International Gemological Institute

FD - 10 20

www.igi.org



THIS DOCUMENT WAS PRODUCED WITH THE FOLLOWING SECURITY MEASURES: SPECIAL DOCUMENT PAPER, INK SCREENS, WATERMARK, BACKGROUND DESIGNS, HOLOGRAM AND OTHER SECURITY FEATURES NOT LISTED AND DO EXCEED DOCUMENT SECURITY INDUSTRY GUIDELINE

July 28, 2025
IGI Report No LG724510489
ROUND BRILLIANT

8.11 - 8.16 x 4.91 MM		2.01 CARATS	
Carat Weight		Color Grade	Vs 1
Clarity Grade		Cut Grade	IDEAL
Depth		Table	60.4%
Girdle			59%
Culet			Medium To Slightly Thick (Faceted)
Polish			Pointed
Symmetry			EXCELLENT
Fluorescence			NONE
			cert 1c70410184

Comments:
This Laboratory Grown Diamond was created by Chemical Vapor Deposition (CVD) growth process.