



ELECTRONIC COPY

LABORATORY GROWN DIAMOND REPORT

LG724511360
Report verification at igi.org

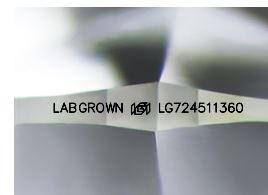
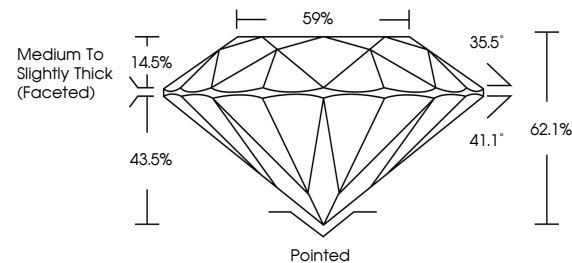
July 22, 2025	
IGI Report Number	LG724511360
Description	LABORATORY GROWN DIAMOND
Shape and Cutting Style	ROUND BRILLIANT
Measurements	7.57 - 7.63 X 4.72 MM
GRADING RESULTS	
Carat Weight	1.68 CARAT
Color Grade	E
Clarity Grade	VVS 2
Cut Grade	IDEAL

ADDITIONAL GRADING INFORMATION

Polish	EXCELLENT
Symmetry	EXCELLENT
Fluorescence	NONE
Inscription(s)	LABGROWN 16 LG724511360

Comments: This Laboratory Grown Diamond was created by Chemical Vapor Deposition (CVD) growth process.
Type IIa

PROPORTIONS



Sample Image Used

COLOR

D E F G H I J Faint Very Light Light

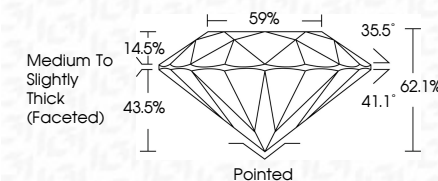
CLARITY

IF	VS ¹⁻²	VS ¹⁻²	SI ¹⁻²	I ¹⁻³
Internally Flawless	Very Very Slightly Included	Very Slightly Included	Slightly Included	Included

LABORATORY GROWN DIAMOND REPORT



July 22, 2025	
IGI Report Number	LG724511360
Description	LABORATORY GROWN DIAMOND
Shape and Cutting Style	ROUND BRILLIANT
Measurements	7.57 - 7.63 X 4.72 MM
GRADING RESULTS	
Carat Weight	1.68 CARAT
Color Grade	E
Clarity Grade	VVS 2
Cut Grade	IDEAL



ADDITIONAL GRADING INFORMATION

Polish	EXCELLENT
Symmetry	EXCELLENT
Fluorescence	NONE
Inscription(s)	LABGROWN (LGI) LG724511360
Comments: This Laboratory Grown Diamond was created by Chemical Vapor Deposition (CVD) growth process.	
Type IIa	



IG



© IGI 2020, International Gemological Institute

FD - 10 20



THIS DOCUMENT WAS PRODUCED WITH THE FOLLOWING SECURITY MEASURES: SPECIAL DOCUMENT PAPER, INK SCREENS, WATERMARK, BACKGROUND DESIGNS, HOLOGRAM AND OTHER SECURITY FEATURES NOT LISTED AND DO EXCEED DOCUMENT SECURITY INDUSTRY GUIDELINES

www.igi.org

July 22, 2025
IGI Report No. IG724511360

IGI Report No LG75
BOJIND BRILLIANT

7.57 - 7.63 X 4.72 MM
Carat Weight
1.68 CARAT

7.57 - 7.60 X 4.72 mm	1.68 CARAT	E
Carat Weight		
Color Grade		

Clarity Grade	WS 2
FL	
IF	
VVS	
VS	
SI	
I	
P	

Cut Grade	IDEAL
Depth	62.1%

	59%
Table	
Circle	

	Pointed	EXCELLENT
Culet		
Polish		

	Symmetry	Fluorescence	EXCELLENT	NONE	LABORATORY
1					
2					
3					
4					
5					
6					
7					
8					
9					
10					
11					
12					
13					
14					
15					
16					
17					
18					
19					
20					
21					
22					
23					
24					
25					
26					
27					
28					
29					
30					
31					
32					
33					
34					
35					
36					
37					
38					
39					
40					
41					
42					
43					
44					
45					
46					
47					
48					
49					
50					
51					
52					
53					
54					
55					
56					
57					
58					
59					
60					
61					
62					
63					
64					
65					
66					
67					
68					
69					
70					
71					
72					
73					
74					
75					
76					
77					
78					
79					
80					
81					
82					
83					
84					
85					
86					
87					
88					
89					
90					
91					
92					
93					
94					
95					
96					
97					
98					
99					
100					

LG724511360

Comments:
This Laboratory Grown Diamond was
created by Chemical Vapor Deposition

Type IIa (CVD) growth process.