



**ELECTRONIC COPY**

## LABORATORY GROWN DIAMOND REPORT

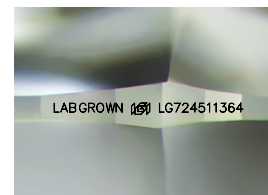
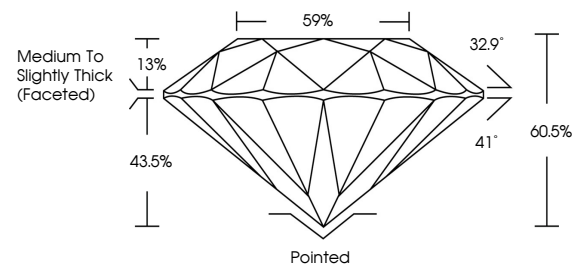
LG724511364  
Report verification at [igi.org](https://igi.org)

July 23, 2025	
IGI Report Number	LG724511364
Description	LABORATORY GROWN DIAMOND
Shape and Cutting Style	ROUND BRILLIANT
Measurements	8.46 - 8.51 X 5.13 MM
GRADING RESULTS	
Carat Weight	2.27 CARATS
Color Grade	E
Clarity Grade	VVS 2
Cut Grade	IDEAL

### ADDITIONAL GRADING INFORMATION

Polish	EXCELLENT
Symmetry	EXCELLENT
Fluorescence	NONE
Inscription(s)	LABGROWN  LG724511364
Comments: This Laboratory Grown Diamond was created by Chemical Vapor Deposition (CVD) growth process.	
Type IIa	

## PROPORTIONS



Sample Image Used

COLOR

D E F G H I J Faint Very Light Light

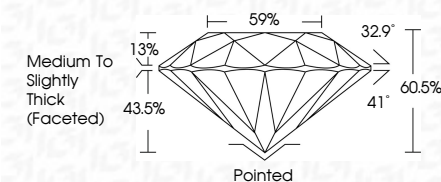
## CLARITY

IF	VS <sup>1-2</sup>	VS <sup>1-2</sup>	SI <sup>1-2</sup>	I <sup>1-3</sup>
Internally Flawless	Very Very Slightly Included	Very Slightly Included	Slightly Included	Included

## LABORATORY GROWN DIAMOND REPORT



July 23, 2025	
IGI Report Number	LG724511364
Description	LABORATORY GROWN DIAMOND
Shape and Cutting Style	ROUND BRILLIANT
Measurements	8.46 - 8.51 X 5.13 MM
GRADING RESULTS	
Carat Weight	2.27 CARATS
Color Grade	E
Clarity Grade	VVS 2
Cut Grade	IDEAL



### ADDITIONAL GRADING INFORMATION

Polish	EXCELLENT
Symmetry	EXCELLENT
Fluorescence	NONE
Inscription(s)	LABGROWN (10) LG724511364
Comments: This Laboratory Grown Diamond was created by Chemical Vapor Deposition (CVD) growth process. Type IIa	



© IGI 2020, International Gemological Institute

FD - 10 20



THIS DOCUMENT WAS PRODUCED WITH THE FOLLOWING SECURITY MEASURES: SPECIAL DOCUMENT PAPER, INK SCREENS, WATERMARK, BACKGROUND DESIGNS, HOLOGRAM AND OTHER SECURITY FEATURES NOT LISTED AND DO EXCEED DOCUMENT SECURITY INDUSTRY GUIDELINES

**www.igi.org**

July 23, 2025  
GI Report No LG724511364  
ROUND BRILLIANT

2.27 CARATS	2.27 CARATS
VS2	VS2
IDPAL	IDPAL
60.05%	60.05%
59%	59%
Medium to Slightly Thick (Faceted)	Medium to Slightly Thick (Faceted)
Pointed	Pointed
EXCELLENT	EXCELLENT
NONE	NONE
1.83mm x 1.83mm	1.83mm x 1.83mm

**Comments:**  
This Laboratory Grown Diamond was  
created by Chemical Vapor Deposition  
(CVD) growth process.