

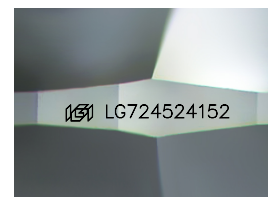
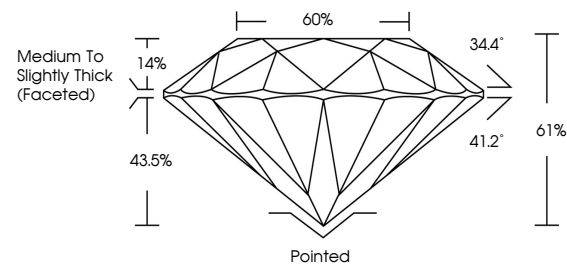


**ELECTRONIC COPY**

## LABORATORY GROWN DIAMOND REPORT

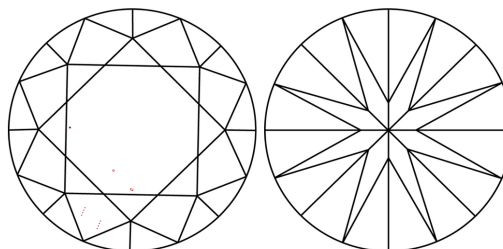
LG724524152  
Report verification at [igi.org](https://igi.org)

## PROPORTIONS



Sample Image Used

## CLARITY CHARACTERISTICS



## KEY TO SYMBOLS

Red symbols indicate internal characteristics.  
Green symbols indicate external characteristics.

## COLOR

D E F G H I J Faint Very Light Light

## CLARITY

IF WS<sup>1-2</sup> VS<sup>1-2</sup> SI<sup>1-2</sup> |<sup>1-3</sup>

Internally Flawless	Very Very Slightly Included	Very Slightly Included	Slightly Included	Included
------------------------	--------------------------------	---------------------------	----------------------	----------

## LABORATORY GROWN DIAMOND REPORT



July 25, 2025

IGI Report Number **LG724524152**Description **LABORATORY GROWN DIAMOND**Shape and Cutting Style **ROUND BRILLIANT**

Measurements **9.31 - 9.37 X 5.70 MM**

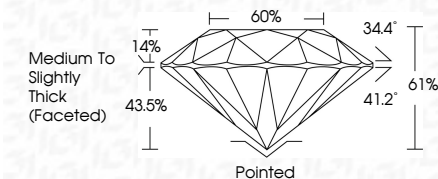
## GRADING RESULTS

Carat Weight **3.06 CARATS**

Color Grade E

Clarity Grade VS 1

Cut Grade **IDEAL**



### ADDITIONAL GRADING INFORMATION

Polish **EXCELLENT**Symmetry **EXCELLENT**Fluorescence **NONE**Inscription(s)  LG724524152

Comments: This Laboratory Grown Diamond was created by Chemical Vapor Deposition (CVD) growth process.  
Type IIa



© IGI 2020, International Gemological Institute

FD - 10 20

**www.igi.org**



THIS DOCUMENT WAS PRODUCED WITH THE FOLLOWING SECURITY MEASURES: SPECIAL DOCUMENT PAPER, INK SCREENS, WATERMARK, BACKGROUND DESIGNS, HOLOGRAM AND OTHER SECURITY FEATURES NOT LISTED AND DO EXCEED DOCUMENT SECURITY INDUSTRY GUIDELINE

July 25, 2025  
GI Report No LG724524152  
ROUND BRILLIANT

<b>CORAL BELLE™</b>	<b>3.16 x 9.37 x 5.70 MM</b>	<b>3.06 CARATS</b>
Coral Weight		
Color Grade		
Clarity Grade	VSI	
Depth	IDP&L	
Girdle	61%	
Table	60%	
Grade	Medium To Slightly Thick (Faceted)	
Culet	Poined	
Polish	Excellent	
Symmetry	Excellent	
Fluorescence	None	
Comments:		

**Comments:**  
This Laboratory Grown Diamond was  
created by Chemical Vapor Deposition  
(CVD) growth process.