

INTERNATIONAL
GEMOLOGICAL
INSTITUTE

ELECTRONIC COPY

LABORATORY GROWN DIAMOND REPORT

July 26, 2025

IGI Report Number

DESCRIPTION

Shape and Cutting Style

Measurements

GRADING RESULTS

Carat Weight

Color Grade

Clarity Grade

Cut Grade

ADDITIONAL GRADING INFORMATION

Polish

Symmetry

Fluorescence

Inscription(s)

Comments: HEARTS & ARROWS

LG724532664

LABORATORY GROWN DIAMOND

ROUND BRILLIANT

9.37 - 9.43 X 5.79 MM

3.13 CARATS

D

INTERNALLY FLAWLESS

IDEAL

EXCELLENT

EXCELLENT

NONE

IGI LG724532664

As Grown - No indication of post-growth treatment.
This Laboratory Grown Diamond was created by High Pressure High Temperature (HPHT) growth process.
Type II

LABORATORY GROWN DIAMOND REPORT

IGI

LABORATORY GROWN DIAMOND REPORT

July 26, 2025

IGI Report No LG724532664

ROUND BRILLIANT

9.37 - 9.43 X 5.79 MM

3.13 CARATS

D

IF

IDEAL

61.7%

57%

Medium (Faceted)

Pointed

EXCELLENT

EXCELLENT

NONE

IGI LG724532664

Comments: HEARTS & ARROWS

IGI

LABORATORY GROWN DIAMOND REPORT

July 26, 2025

IGI Report No LG724532664

ROUND BRILLIANT

9.37 - 9.43 X 5.79 MM

3.13 CARATS

D

IF

IDEAL

61.7%

57%

Medium (Faceted)

Pointed

EXCELLENT

EXCELLENT

NONE

IGI LG724532664

Comments: HEARTS & ARROWS

LABORATORY GROWN DIAMOND REPORT

IGI

LABORATORY GROWN DIAMOND REPORT

July 26, 2025

IGI Report No LG724532664

ROUND BRILLIANT

9.37 - 9.43 X 5.79 MM

3.13 CARATS

D

IF

IDEAL

61.7%

57%

Medium (Faceted)

Pointed

EXCELLENT

EXCELLENT

NONE

IGI LG724532664

Comments: HEARTS & ARROWS

IGI

LABORATORY GROWN DIAMOND REPORT

July 26, 2025

IGI Report No LG724532664

ROUND BRILLIANT

9.37 - 9.43 X 5.79 MM

3.13 CARATS

D

IF

IDEAL

61.7%

57%

Medium (Faceted)

Pointed

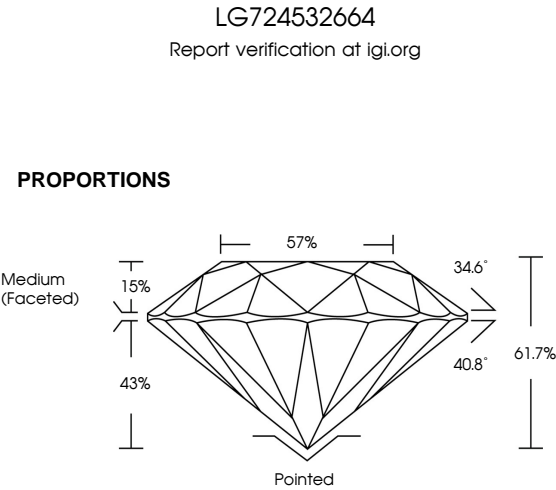
EXCELLENT

EXCELLENT

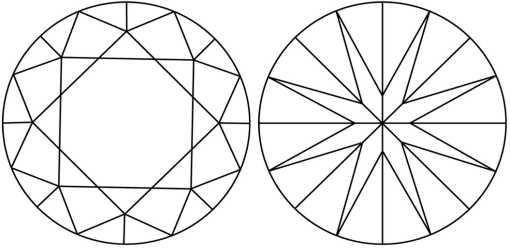
NONE

IGI LG724532664

Comments: HEARTS & ARROWS

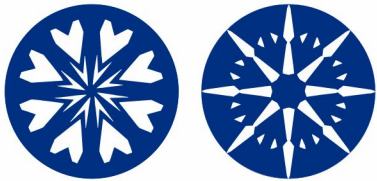


CLARITY CHARACTERISTICS



KEY TO SYMBOLS

Red symbols indicate internal characteristics.
Green symbols indicate external characteristics.



COLOR

D	E	F	G	H	I	J	Faint	Very Light	Light
---	---	---	---	---	---	---	-------	------------	-------

CLARITY

IF	VS ¹⁻²	VS ¹⁻²	SI ¹⁻²	I ¹⁻³
Internally Flawless	Very Very Slightly Included	Very Slightly Included	Slightly Included	Included



July 26, 2025

IGI Report Number **LG724532664**

Description **LABORATORY GROWN DIAMOND**

Shape and Cutting Style **ROUND BRILLIANT**

Measurements **9.37 - 9.43 X 5.79 MM**

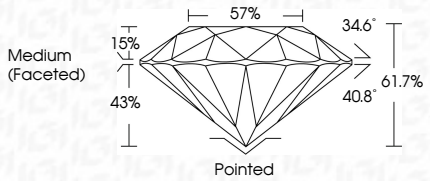
GRADING RESULTS

Carat Weight **3.13 CARATS**

Color Grade **D**

Clarity Grade **INTERNALLY FLAWLESS**

Cut Grade **IDEAL**



ADDITIONAL GRADING INFORMATION

Polish **EXCELLENT**

Symmetry **EXCELLENT**

Fluorescence **NONE**

Inscription(s) **IGI LG724532664**

Comments: HEARTS & ARROWS
As Grown - No indication of post-growth treatment.
This Laboratory Grown Diamond was created by High Pressure High Temperature (HPHT) growth process.
Type II



July 26, 2025	IGI Report No LG724532664	ROUND BRILLIANT	9.37 - 9.43 X 5.79 MM	3.13 CARATS	D	IF	IDEAL	61.7%	57%	Medium (Faceted)	Pointed	EXCELLENT	EXCELLENT	NONE	IGI LG724532664	Comments: HEARTS & ARROWS
July 26, 2025	IGI Report No LG724532664	ROUND BRILLIANT	9.37 - 9.43 X 5.79 MM	3.13 CARATS	D	IF	IDEAL	61.7%	57%	Medium (Faceted)	Pointed	EXCELLENT	EXCELLENT	NONE	IGI LG724532664	Comments: HEARTS & ARROWS
July 26, 2025	IGI Report No LG724532664	ROUND BRILLIANT	9.37 - 9.43 X 5.79 MM	3.13 CARATS	D	IF	IDEAL	61.7%	57%	Medium (Faceted)	Pointed	EXCELLENT	EXCELLENT	NONE	IGI LG724532664	Comments: HEARTS & ARROWS
July 26, 2025	IGI Report No LG724532664	ROUND BRILLIANT	9.37 - 9.43 X 5.79 MM	3.13 CARATS	D	IF	IDEAL	61.7%	57%	Medium (Faceted)	Pointed	EXCELLENT	EXCELLENT	NONE	IGI LG724532664	Comments: HEARTS & ARROWS