



**ELECTRONIC COPY**

## LABORATORY GROWN DIAMOND REPORT

LG724544011  
Report verification at [igi.org](http://igi.org)

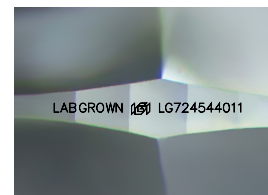
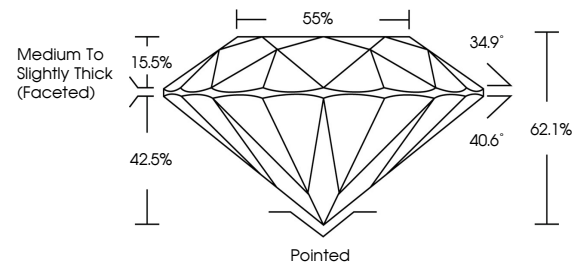
July 23, 2025	
IGI Report Number	LG724544011
Description	LABORATORY GROWN DIAMOND
Shape and Cutting Style	ROUND BRILLIANT
Measurements	9.06 - 9.09 X 5.64 MM
GRADING RESULTS	
Carat Weight	2.85 CARATS
Color Grade	E
Clarity Grade	VVS 2
Cut Grade	IDEAL

### ADDITIONAL GRADING INFORMATION

Polish	EXCELLENT
Symmetry	EXCELLENT
Fluorescence	NONE
Inscription(s)	LABGROWN 16 LG724544011

Comments: This Laboratory Grown Diamond was created by Chemical Vapor Deposition (CVD) growth process.  
Type IIa

## PROPORTIONS



Sample Image Used

## COLOR

D E F G H I J Faint Very Light Light

## CLARITY

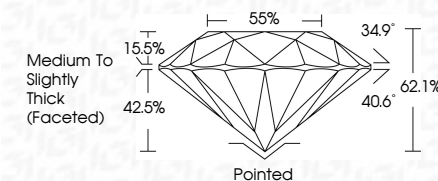
IF                      VWS<sup>1-2</sup>                      VS<sup>1-2</sup>                      SI<sup>1-2</sup>                      I<sup>1-3</sup>

Internally Flawless	Very Very Slightly Included	Very Slightly Included	Slightly Included	Included
------------------------	--------------------------------	---------------------------	----------------------	----------

## LABORATORY GROWN DIAMOND REPORT



July 23, 2025	
IGI Report Number	LG724544011
Description	LABORATORY GROWN DIAMOND
Shape and Cutting Style	ROUND BRILLIANT
Measurements	9.06 - 9.09 X 5.64 MM
GRADING RESULTS	
Carat Weight	2.85 CARATS
Color Grade	E
Clarity Grade	VVS 2
Cut Grade	IDEAL



### ADDITIONAL GRADING INFORMATION

Polish	EXCELLENT
Symmetry	EXCELLENT
Fluorescence	NONE
Inscription(s)	LABGROWN (IGI) LG724544011
Comments: This Laboratory Grown Diamond was created by Chemical Vapor Deposition (CVD) growth process.	
Type Ila	



© IGI 2020, International Gemological Institute

FD - 10 20

**www.igi.org**



THIS DOCUMENT WAS PRODUCED WITH THE FOLLOWING SECURITY MEASURES: SPECIAL DOCUMENT PAPER, INK SCREENS, WATERMARK, BACKGROUND DESIGNS, HOLOGRAM AND OTHER SECURITY FEATURES NOT LISTED AND DO EXCEED DOCUMENT SECURITY INDUSTRY GUIDELINE

July 23, 2025  
GI Report No LG724544011  
ROUND BRILLIANT

IGI Report No LG75  
ROUND BRILLIANT

2.06 - 9.09 X 5.64 MM

Carat Weight  
2.85 CARATS

Color Grade	Color	Color Grade	Color
1	White	1	White
2	Light Yellow	2	Light Yellow
3	Yellow	3	Yellow
4	Orange	4	Orange
5	Red	5	Red
6	Dark Red	6	Dark Red
7	Black	7	Black

Clarity Grade	VS2	IDEAL
Cut Grade		

Depth	62.1%	62.1%
Depth	62.1%	62.1%

table	60%
Girdle	Medium To Slightly

Thick (Faceted)

Culet	Pointed
Polish	EXCELLENT

Symmetry

Fluorescence	LABGROWN 157	NONE
Inscription(s)		

Comments: LG724544011

This Laboratory Grown Diamond was created by Chemical Vapor Deposition

(CVD) growth process,  
Type IIa