

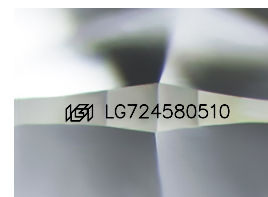
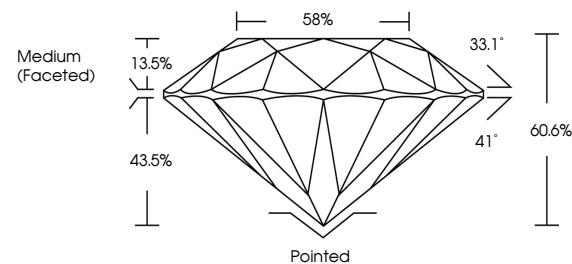


ELECTRONIC COPY

LABORATORY GROWN DIAMOND REPORT

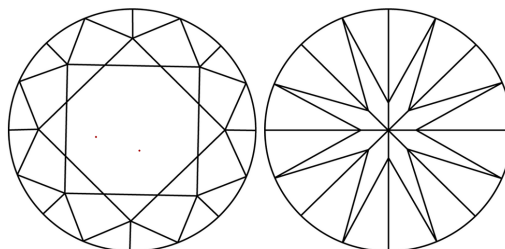
LG724580510
Report verification at igi.org

PROPORTIONS



Sample Image Used

CLARITY CHARACTERISTICS



KEY TO SYMBOLS

Red symbols indicate internal characteristics.
Green symbols indicate external characteristics.

COLOR

D E F G H I J Faint Very Light Light

CLARITY

IF WS¹⁻² VS¹⁻² SI¹⁻² |¹⁻³

Internally Flawless	Very Very Slightly Included	Very Slightly Included	Slightly Included	Included
------------------------	--------------------------------	---------------------------	----------------------	----------

LABORATORY GROWN DIAMOND REPORT



July 28, 2025

IGI Report Number **LG724580510**

Description	LABORATORY GROWN DIAMOND
-------------	--------------------------

Shape and Cutting Style **ROUND BRILLIANT**

Measurements 8.14 - 8.19 X 4.95 MM

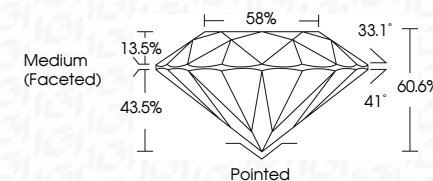
GRADING RESULTS

Carat Weight **2.02 CARATS**

Color Grade E

Clarity Grade **VVS 2**

Cut Grade **IDEAL**



ADDITIONAL GRADING INFORMATION

Polish **EXCELLENT**Symmetry **EXCELLENT**Fluorescence **NONE**Inscription(s) LG724580510

Comments: This Laboratory Grown Diamond was created by Chemical Vapor Deposition (CVD) growth process.

Type IIa



July 28, 2025	G Report No LG72450510	202 CARATS	VVS 2	60.6%	58%	Medium (Faceted)	Painted	EXCELLENT	EXCELLENT	NONE	68(LG72450510)	Comments: The Laboratory Grown Diamond was created by Chemical Vapor Deposition (CVD) growth process. type IIa
ROUND BRILLIANT	8.14 - 8.19 X 4.95 MM	Carat Weight	Color Grade	Clarity Grade	Cut Grade	Depth	Gable	Symmetry	Fluorescence	Fluorescence(s)		



THIS DOCUMENT WAS PRODUCED WITH THE FOLLOWING SECURITY MEASURES: SPECIAL DOCUMENT PAPER, INK SCREENS, WATERMARK BACKGROUND DESIGNS, HOLOGRAM AND OTHER SECURITY FEATURES NOT LISTED AND DO EXCEED DOCUMENT SECURITY INDUSTRY GUIDELINES