

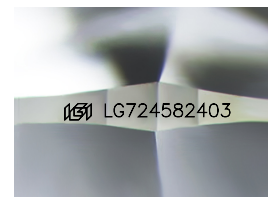
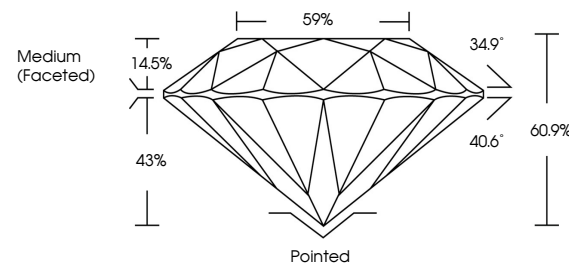


ELECTRONIC COPY

LABORATORY GROWN DIAMOND REPORT

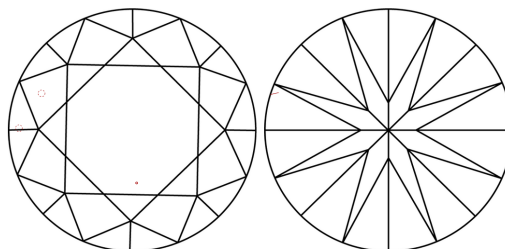
LG724582403
Report verification at igi.org

PROPORTIONS



Sample Image Used

CLARITY CHARACTERISTICS



KEY TO SYMBOLS

Red symbols indicate internal characteristics.
Green symbols indicate external characteristics.

COLOR

D E F G H I J Faint Very Light Light

CLARITY

IF WS¹⁻² VS¹⁻² SI¹⁻² I¹⁻³

Internally Flawless	Very Very Slightly Included	Very Slightly Included	Slightly Included	Included
------------------------	--------------------------------	---------------------------	----------------------	----------



© IGI 2020, International Gemological Institute

FD - 10 20

www.igi.org

LABORATORY GROWN DIAMOND REPORT



July 30, 2025

IGI Report Number **LG724582403**

Description	LABORATORY GROWN DIAMOND
-------------	--------------------------

Shape and Cutting Style **ROUND BRILLIANT**

Measurements	7.93 - 7.99 X 4.85 MM
--------------	-----------------------

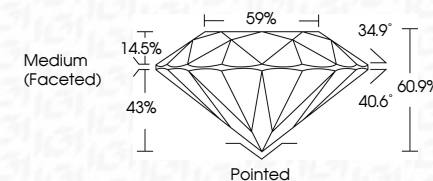
GRADING RESULTS

Carat Weight **1.90 CARAT**

Color Grade	D
-------------	---

Clarity Grade **VVS 2**

Cut Grade **IDEAL**



ADDITIONAL GRADING INFORMATION

Polish **EXCELLENT**Symmetry **EXCELLENT**Fluorescence **NONE**Inscription(s) LG724582403

Comments: As Grown - No indication of post-growth treatment.

This Laboratory Grown Diamond was created by High Pressure High Temperature (HPHT) growth process.
Type II



JULY 30, 2025 GI Report No. LG72452403 ROUND BRILLIANT	1.90 CARAT D VS2 IDEAL 60.9% 97% Medium (Faceted)	Polished EXCELLENT EXCELLENT NONE #81 LG72452403	Comments: 1) Growth: No indication of post-growth treatment. 2) This Laboratory Grown Diamond was created by High Pressure High Temperature (HPHT) growth process. Type IIa
--	---	--	---