



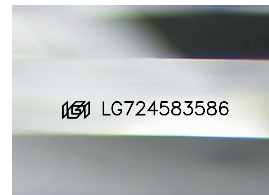
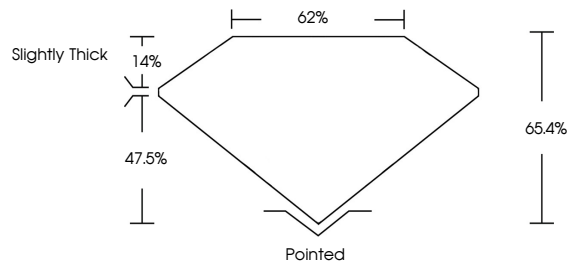
**INTERNATIONAL
GEMOLOGICAL
INSTITUTE**

ELECTRONIC COPY

LABORATORY GROWN DIAMOND REPORT

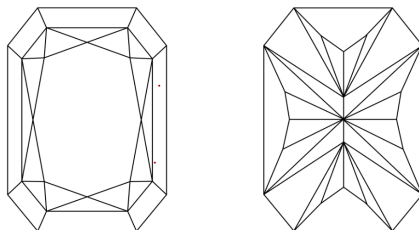
LG724583586
Report verification at lgi.org

PROPORTIONS



Sample Image Used

CLARITY CHARACTERISTICS



KEY TO SYMBOLS

Red symbols indicate internal characteristics.
Green symbols indicate external characteristics.

COLOR

D E F G H I J Faint Very Light Light

CLARITY

IF WS¹⁻² VS¹⁻² SI¹⁻² I¹⁻³

Internally Flawless	Very Very Slightly Included	Very Slightly Included	Slightly Included	Included
------------------------	--------------------------------	---------------------------	----------------------	----------



© IGI 2020, International Gemological Institute

FD - 10 20

www.igi.org

THIS DOCUMENT WAS PRODUCED WITH THE FOLLOWING SECURITY MEASURES: SPECIAL DOCUMENT PAPER, INK SCREENS, WATERMARK, BACKGROUND DESIGNS, HOLOGRAM AND OTHER SECURITY FEATURES NOT LISTED AND DO EXCEED DOCUMENT SECURITY INDUSTRY GUIDELINES

LABORATORY GROWN DIAMOND REPORT



July 28, 2025

IGI Report Number **LG724583586**

Description	LABORATORY GROWN DIAMOND
-------------	--------------------------

Shape and Cutting Style

CUT CORNERED
RECTANGULAR MODIFIED
BRILLIANT

Measurements **7.25 X 4.94 X 3.23 MM**

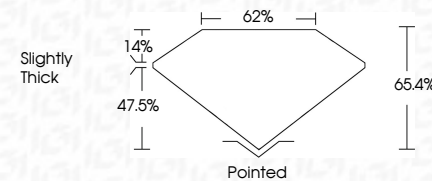
GRADING RESULTS

Carat Weight 1.02 CARAT

Color Grade E

Clarity Grade VVS 2

Cut Grade **EXCELLENT**



ADDITIONAL GRADING INFORMATION

Polish **EXCELLENT**Symmetry **EXCELLENT**Fluorescence **NONE**Inscription(s) LG724583586

Comments: This Laboratory Grown Diamond was created by Chemical Vapor Deposition (CVD) growth process.
Type IIa



IG

July 28, 2025	7.25 X 4.94 X 3.23 MM	1.02 CARAT	
IGI Report No. I672468386	Color Grade		
IGI CORNERED RECT. MODIFIED BRILLIANT	Clarity Grade	VVS 2	
	Cut Grade	EXCELLENT	
	Depth	65.4%	
	Table	62%	
	Grille		Slightly Thick
	Quiet		Pointed
	Polish		EXCELLENT
	Symmetry		EXCELLENT
	Fluorescence		NONE
	Inclusions(s)		
			gsl L672468386
	Comments:		
	The Laboratory Grown Diamond was created by Chemical Vapor Deposition (CVD) growth process.		
	Type IId		