



# INTERNATIONAL GEMOLOGICAL INSTITUTE

ELECTRONIC COPY

## LABORATORY GROWN DIAMOND REPORT

July 29, 2025  
IGI Report Number **LG724595707**  
Description **LABORATORY GROWN DIAMOND**  
Shape and Cutting Style **PEAR BRILLIANT**  
Measurements **5.76 X 3.81 X 2.33 MM**

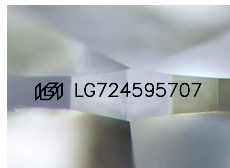
### GRADING RESULTS

Carat Weight **0.31 CARAT**  
Color Grade **D**  
Clarity Grade **SI 1**

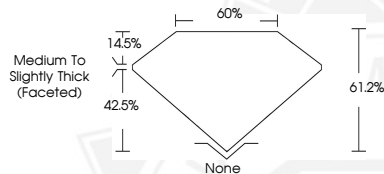
### ADDITIONAL GRADING INFORMATION

Polish **VERY GOOD**  
Symmetry **VERY GOOD**  
Fluorescence **NONE**  
Inscription(s) **IGI LG724595707**

Comments: As Grown - No indication of post-growth treatment. This Laboratory Grown Diamond was created by High Pressure High Temperature (HPHT) growth process. Type II



Sample Image Used



July 29, 2025  
IGI Report Number **LG724595707**  
PEAR BRILLIANT  
LABORATORY GROWN DIAMOND  
5.76 X 3.81 X 2.33 MM  
Carat Weight **0.31 CARAT**  
Color Grade **D**  
Clarity Grade **SI 1**  
Polish **VERY GOOD**  
Symmetry **VERY GOOD**  
Fluorescence **NONE**  
Inscription(s) **IGI LG724595707**

Comments: As Grown - No indication of post-growth treatment. This Laboratory Grown Diamond was created by High Pressure High Temperature (HPHT) growth process. Type II



July 29, 2025  
IGI Report Number **LG724595707**  
PEAR BRILLIANT  
LABORATORY GROWN DIAMOND  
5.76 X 3.81 X 2.33 MM  
Carat Weight **0.31 CARAT**  
Color Grade **D**  
Clarity Grade **SI 1**  
Polish **VERY GOOD**  
Symmetry **VERY GOOD**  
Fluorescence **NONE**  
Inscription(s) **IGI LG724595707**

Comments: As Grown - No indication of post-growth treatment. This Laboratory Grown Diamond was created by High Pressure High Temperature (HPHT) growth process. Type II



THIS DOCUMENT WAS PRODUCED WITH THE FOLLOWING SECURITY MEASURES: SPECIAL DOCUMENT PAPER, INK SCREENS, WATERMARK, BACKGROUND DESIGNS, HOLOGRAM AND OTHER SECURITY FEATURES NOT LISTED AND DO EXCEED DOCUMENT SECURITY INDUSTRY GUIDELINES.

For terms & conditions and to verify this report, please visit [www.igi.org](http://www.igi.org)