



INTERNATIONAL GEMOLOGICAL INSTITUTE

ELECTRONIC COPY

LABORATORY GROWN DIAMOND REPORT

July 31, 2025
IGI Report Number **LG725501048**
Description **LABORATORY GROWN DIAMOND**
Shape and Cutting Style **ROUND BRILLIANT**
Measurements **5.35 - 5.38 X 3.24 MM**

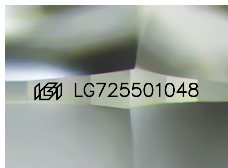
GRADING RESULTS

Carat Weight **0.57 CARAT**
Color Grade **D**
Clarity Grade **VVS 1**
Cut Grade **IDEAL**

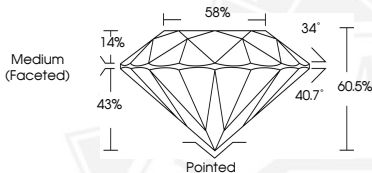
ADDITIONAL GRADING INFORMATION

Polish **EXCELLENT**
Symmetry **EXCELLENT**
Fluorescence **NONE**
Inscription(s) **IGI LG725501048**

Comments: As Grown - No indication of post-growth treatment. This Laboratory Grown Diamond was created by High Pressure High Temperature (HPHT) growth process. Type II



Sample Image Used



July 31, 2025

IGI Report Number **LG725501048**
ROUND BRILLIANT
LABORATORY GROWN DIAMOND
5.35 - 5.38 X 3.24 MM

Carat Weight **0.57 CARAT**
Color Grade **D**
Clarity Grade **VVS 1**
Cut Grade **IDEAL**
Polish **EXCELLENT**
Symmetry **EXCELLENT**
Fluorescence **NONE**
Inscription(s) **IGI LG725501048**

Comments: As Grown - No indication of post-growth treatment. This Laboratory Grown Diamond was created by High Pressure High Temperature (HPHT) growth process. Type II



July 31, 2025

IGI Report Number **LG725501048**
ROUND BRILLIANT
LABORATORY GROWN DIAMOND
5.35 - 5.38 X 3.24 MM

Carat Weight **0.57 CARAT**
Color Grade **D**
Clarity Grade **VVS 1**
Cut Grade **IDEAL**
Polish **EXCELLENT**
Symmetry **EXCELLENT**
Fluorescence **NONE**
Inscription(s) **IGI LG725501048**

Comments: As Grown - No indication of post-growth treatment. This Laboratory Grown Diamond was created by High Pressure High Temperature (HPHT) growth process. Type II



THIS DOCUMENT WAS PRODUCED WITH THE FOLLOWING SECURITY MEASURES: SPECIAL DOCUMENT PAPER, INK SCREENS, WATERMARK, BACKGROUND DESIGNS, HOLOGRAM AND OTHER SECURITY FEATURES NOT LISTED AND DO EXCEED DOCUMENT SECURITY INDUSTRY GUIDELINES.

For terms & conditions and to verify this report, please visit www.igi.org