



# INTERNATIONAL GEMOLOGICAL INSTITUTE

ELECTRONIC COPY



July 31, 2025

IGI Report Number LG725501050

ROUND BRILLIANT

LABORATORY GROWN DIAMOND

5.31 - 5.34 X 3.29 MM

Carat Weight 0.57 CARAT

Color Grade D

Clarity Grade VVS 2

Cut Grade IDEAL

Polish EXCELLENT

Symmetry EXCELLENT

Fluorescence NONE

Inscription(s) IGI LG725501050

Comments: As Grown - No indication of post-growth treatment. This Laboratory Grown Diamond was created by High Pressure High Temperature (HPHT) growth process. Type II

## LABORATORY GROWN DIAMOND REPORT

July 31, 2025

IGI Report Number

LG725501050

Description

LABORATORY GROWN DIAMOND

Shape and Cutting Style

ROUND BRILLIANT

Measurements

5.31 - 5.34 X 3.29 MM

### GRADING RESULTS

Carat Weight

0.57 CARAT

Color Grade

D

Clarity Grade

VVS 2

Cut Grade

IDEAL

### ADDITIONAL GRADING INFORMATION

Polish

EXCELLENT

Symmetry

EXCELLENT

Fluorescence

NONE

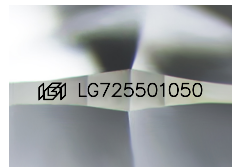
Inscription(s)

IGI LG725501050

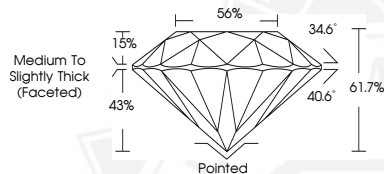
Comments: As Grown - No indication of post-growth treatment.

This Laboratory Grown Diamond was created by High Pressure High Temperature (HPHT) growth process.

Type II



Sample Image Used



THIS DOCUMENT WAS PRODUCED WITH THE FOLLOWING SECURITY MEASURES: SPECIAL DOCUMENT PAPER, INK SCREENS, WATERMARK, BACKGROUND DESIGNS, HOLOGRAM AND OTHER SECURITY FEATURES NOT LISTED AND DO EXCEED DOCUMENT SECURITY INDUSTRY GUIDELINES.

For terms & conditions and to verify this report, please visit [www.igi.org](http://www.igi.org)



July 31, 2025

IGI Report Number LG725501050

ROUND BRILLIANT

LABORATORY GROWN DIAMOND

5.31 - 5.34 X 3.29 MM

Carat Weight 0.57 CARAT

Color Grade D

Clarity Grade VVS 2

Cut Grade IDEAL

Polish EXCELLENT

Symmetry EXCELLENT

Fluorescence NONE

Inscription(s) IGI LG725501050

Comments: As Grown - No indication of post-growth treatment. This Laboratory Grown Diamond was created by High Pressure High Temperature (HPHT) growth process. Type II