



**ELECTRONIC COPY**

## LABORATORY GROWN DIAMOND REPORT

|                         |                          |
|-------------------------|--------------------------|
| July 31, 2025           |                          |
| IGI Report Number       | LG725504037              |
| Description             | LABORATORY GROWN DIAMOND |
| Shape and Cutting Style | ROUND BRILLIANT          |
| Measurements            | 6.41 - 6.48 X 3.97 MM    |

## GRADING RESULTS

|               |                     |
|---------------|---------------------|
| Carat Weight  | 1.01 CARAT          |
| Color Grade   | D                   |
| Clarity Grade | INTERNALLY FLAWLESS |
| Cut Grade     | IDEAL               |

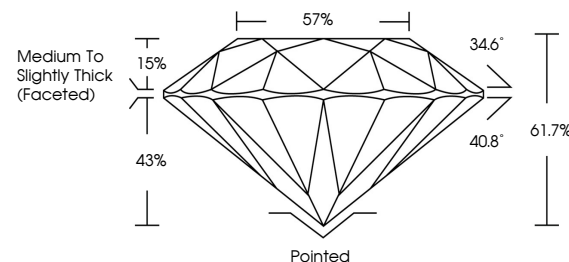
### ADDITIONAL GRADING INFORMATION

|                |                 |
|----------------|-----------------|
| Polish         | EXCELLENT       |
| Symmetry       | EXCELLENT       |
| Fluorescence   | NONE            |
| Inscription(s) | 151 LG725504037 |

Comments: HEARTS & ARROWS  
As Grown - No indication of post-growth treatment.  
This Laboratory Grown Diamond was created by High  
Pressure High Temperature (HPHT) growth process.  
Type II

LG725504037  
Report verification at [lgi.org](https://lgi.org)

## PROPORTIONS



## CLARITY CHARACTERISTICS

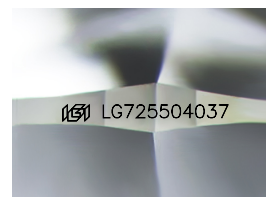


### KEY TO SYMBOLS

Red symbols indicate internal characteristics.  
Green symbols indicate external characteristics.



**www.igi.org**



Sample Image Used

COLOR

D E F G H I J Faint Very Light Light

## CLARITY

IF WS<sup>1-2</sup> VS<sup>1-2</sup> SI<sup>1-2</sup> |<sup>1-3</sup>

| Internally<br>Flawless | Very Very<br>Slightly Included | Very<br>Slightly Included | Slightly<br>Included | Included |
|------------------------|--------------------------------|---------------------------|----------------------|----------|
|------------------------|--------------------------------|---------------------------|----------------------|----------|



© IGI 2020, International Gemological Institute

FD - 10 20

THIS DOCUMENT WAS PRODUCED WITH THE FOLLOWING SECURITY MEASURES: SPECIAL DOCUMENT PAPER, INK SCREENS, WATERMARK, BACKGROUND DESIGNS, HOLOGRAM AND OTHER SECURITY FEATURES NOT LISTED AND DO EXCEED DOCUMENT SECURITY INDUSTRY GUIDELINE

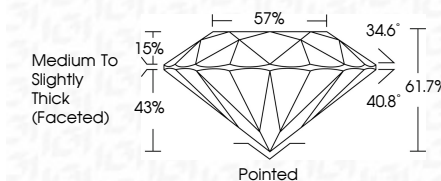
## LABORATORY GROWN DIAMOND REPORT



|                         |                          |
|-------------------------|--------------------------|
| July 31, 2025           |                          |
| IGI Report Number       | LG725504037              |
| Description             | LABORATORY GROWN DIAMOND |
| Shape and Cutting Style | ROUND BRILLIANT          |
| Measurements            | 6.41 - 6.48 X 3.97 MM    |

## GRADING RESULTS

|               |                     |
|---------------|---------------------|
| Carat Weight  | 1.01 CARAT          |
| Color Grade   | D                   |
| Clarity Grade | INTERNALLY FLAWLESS |
| Cut Grade     | IDEAL               |



### ADDITIONAL GRADING INFORMATION

|                |                |
|----------------|----------------|
| Polish         | EXCELLENT      |
| Symmetry       | EXCELLENT      |
| Fluorescence   | NONE           |
| Inscription(s) | 16 LG725504037 |

Comments: HEARTS & ARROWS  
As Grown - No indication of post-growth treatment.  
This Laboratory Grown Diamond was created by High  
Pressure High Temperature (HPHT) growth process.  
Type II



July 31, 2025  
GJ Report No 1G725504037

|                       |                                    |
|-----------------------|------------------------------------|
| Report No. 1572550437 | 1,01 CARAT                         |
| ROUND BRILLIANT       | D                                  |
| 4.41 - 4.48 X 3.97 MM | IF                                 |
| Color Weight          | IDEAL                              |
| Color Grade           | 617%                               |
| Clarity Grade         | 57%                                |
| Cut Grade             | Medium to Slightly Thick (Faceted) |
| Depth                 | Polished                           |
| Table                 | EXCELLENT                          |
| Girdle                | EXCELLENT                          |
|                       | NONE                               |
|                       | Very Sensitive                     |
|                       | Fluorescence                       |
|                       | Symmetry                           |
|                       | Polish                             |
|                       | Clefs                              |

**Comments:**  
**HEARTS & ARROWS**  
 As Grown - No indication of post-growth treatment.