



ELECTRONIC COPY

LG726523422
Report verification at igi.org



August 8, 2025
IGI Report Number **LG726523422**
Description **LABORATORY GROWN DIAMOND**
Shape and Cutting Style **CUT CORNERED
RECTANGULAR MODIFIED
BRILLIANT**
Measurements **12.30 X 9.28 X 6.50 MM**
GRADING RESULTS
Carat Weight **6.44 CARATS**
Color Grade **FANCY VIVID GREEN**
Clarity Grade **VS 1**

August 8, 2025
IGI Report Number **LG726523422**
Description **LABORATORY GROWN DIAMOND**
Shape and Cutting Style **CUT CORNERED RECTANGULAR
MODIFIED BRILLIANT**
Measurements **12.30 X 9.28 X 6.50 MM**

GRADING RESULTS

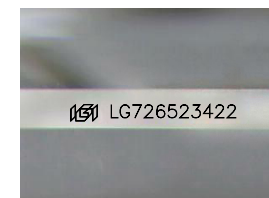
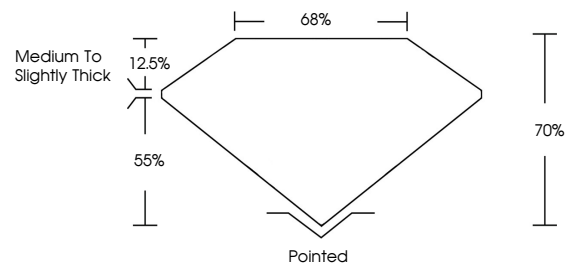
Carat Weight **6.44 CARATS**
Color Grade **FANCY VIVID GREEN**
Clarity Grade **VS 1**

ADDITIONAL GRADING INFORMATION

Polish **EXCELLENT**
Symmetry **EXCELLENT**
Fluorescence **VERY SLIGHT**
Inscription(s) **IGI LG726523422**

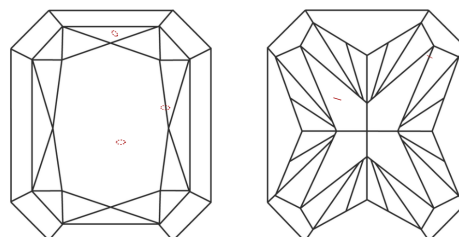
Comments: This Laboratory Grown Diamond was created by Chemical Vapor Deposition (CVD) growth process. Indications of post-growth treatment.

PROPORTIONS



Sample Image Used

CLARITY CHARACTERISTICS



KEY TO SYMBOLS

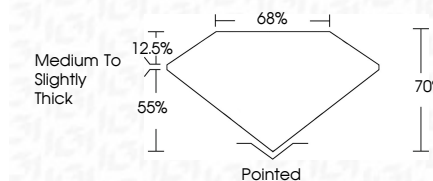
Red symbols indicate internal characteristics.
Green symbols indicate external characteristics.

COLOR

D E F G H I J Faint Very Light Light

CLARITY

| | | | | |
|---------------------|-----------------------------|------------------------|-------------------|------------------|
| IF | VS ¹⁻² | VS ¹⁻² | SI ¹⁻² | I ¹⁻³ |
| Internally Flawless | Very Very Slightly Included | Very Slightly Included | Slightly Included | Included |



ADDITIONAL GRADING INFORMATION

Polish **EXCELLENT**
Symmetry **EXCELLENT**
Fluorescence **VERY SLIGHT**
Inscription(s) **IGI LG726523422**
Comments: This Laboratory Grown Diamond was created by Chemical Vapor Deposition (CVD) growth process. Indications of post-growth treatment.



IGI



August 8, 2025
IGI Report No LG726523422
CUT CORNERED RECT. MODIFIED BRILLIANT
12.30 X 9.28 X 6.50 MM
6.44 CARATS
FANCY VIVID GREEN
VS 1
65%
Medium to Slightly Thick
Pointed
EXCELLENT
EXCELLENT
VERY SLIGHT
IGI LG726523422

Comments: This Laboratory Grown Diamond was created by Chemical Vapor Deposition (CVD) growth process. Indications of post-growth treatment.