



August 6, 2025

IGI Report Number LG727514038

ROUND BRILLIANT

LABORATORY GROWN DIAMOND

5.37 - 5.40 X 3.30 MM

|                |                 |
|----------------|-----------------|
| Carat Weight   | 0.58 CARAT      |
| Color Grade    | D               |
| Clarity Grade  | VVS 2           |
| Cut Grade      | IDEAL           |
| Polish         | EXCELLENT       |
| Symmetry       | EXCELLENT       |
| Fluorescence   | NONE            |
| Inscription(s) | IGI LG727514038 |

Comments: This Laboratory Grown Diamond was created by Chemical Vapor Deposition (CVD) growth process. Type IIa

**LABORATORY GROWN DIAMOND REPORT**

August 6, 2025

IGI Report Number

LG727514038

Description

LABORATORY GROWN DIAMOND

Shape and Cutting Style

ROUND BRILLIANT

Measurements

5.37 - 5.40 X 3.30 MM

**GRADING RESULTS**

Carat Weight

0.58 CARAT

Color Grade

D

Clarity Grade

VVS 2

Cut Grade

IDEAL

**ADDITIONAL GRADING INFORMATION**

Polish

EXCELLENT

Symmetry

EXCELLENT

Fluorescence

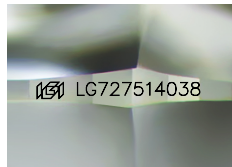
NONE

Inscription(s)

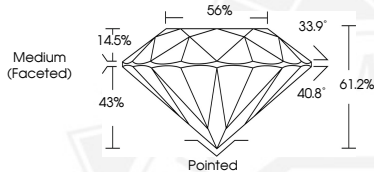
IGI LG727514038

Comments: This Laboratory Grown Diamond was created by Chemical Vapor Deposition (CVD) growth process.

Type IIa



Sample Image Used



August 6, 2025

IGI Report Number LG727514038

ROUND BRILLIANT

LABORATORY GROWN DIAMOND

5.37 - 5.40 X 3.30 MM

|                |                 |
|----------------|-----------------|
| Carat Weight   | 0.58 CARAT      |
| Color Grade    | D               |
| Clarity Grade  | VVS 2           |
| Cut Grade      | IDEAL           |
| Polish         | EXCELLENT       |
| Symmetry       | EXCELLENT       |
| Fluorescence   | NONE            |
| Inscription(s) | IGI LG727514038 |

Comments: This Laboratory Grown Diamond was created by Chemical Vapor Deposition (CVD) growth process. Type IIa



THIS DOCUMENT WAS PRODUCED WITH THE FOLLOWING SECURITY MEASURES: SPECIAL DOCUMENT PAPER, INK SCREENS, WATERMARK, BACKGROUND DESIGNS, HOLOGRAM AND OTHER SECURITY FEATURES NOT LISTED AND DO EXCEED DOCUMENT SECURITY INDUSTRY GUIDELINES.