



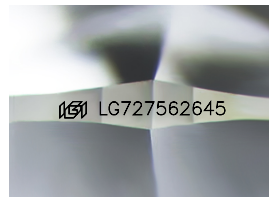
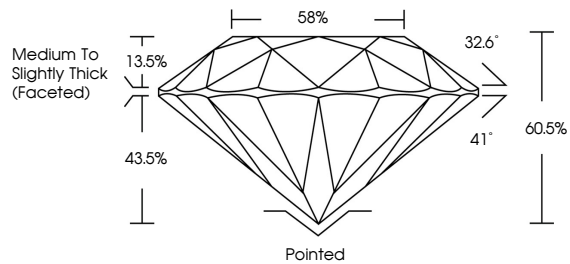
**INTERNATIONAL
GEMOLOGICAL
INSTITUTE**

ELECTRONIC COPY

LABORATORY GROWN DIAMOND REPORT

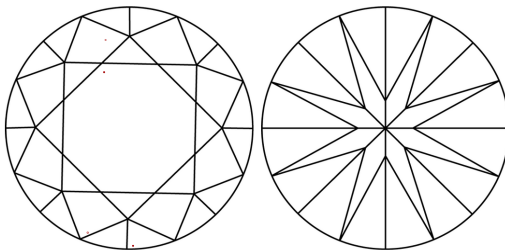
LG727562645
Report verification at igi.org

PROPORTIONS



Sample Image Used

CLARITY CHARACTERISTICS



KEY TO SYMBOLS

Red symbols indicate internal characteristics.
Green symbols indicate external characteristics.

COLOR

D E F G H I J Faint Very Light Light

CLARITY

IF WS¹⁻² VS¹⁻² SI¹⁻² I¹⁻³

Internally Flawless	Very Very Slightly Included	Very Slightly Included	Slightly Included	Included
------------------------	--------------------------------	---------------------------	----------------------	----------



August 12, 2025

IGI Report Number **LG727562645**

Description	LABORATORY GROWN DIAMOND
-------------	--------------------------

Shape and Cutting Style **ROUND BRILLIANT**

Measurements 7.18 - 7.22 X 4.36 MM

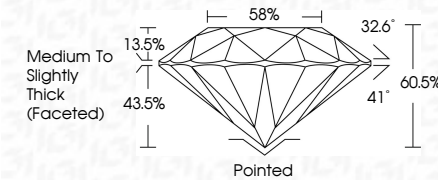
GRADING RESULTS

Carat Weight **1.39 CARAT**

Color Grade	D
-------------	---

Clarity Grade **VVS 2**

Cut Grade **EXCELLENT**



ADDITIONAL GRADING INFORMATION

Polish **EXCELLENT**

Symmetry **EXCELLENT**

Fluorescence NONI

Inscription(s)  LG727562645

Comments: This Laboratory Grown Diamond was created by Chemical Vapor Deposition (CVD) growth process.



IG



© IGI 2020, International Gemological Institute

FD - 10 20

www.igi.org



THIS DOCUMENT WAS PRODUCED WITH THE FOLLOWING SECURITY MEASURES: SPECIAL DOCUMENT PAPER, INK SCREENS, WATERMARK, BACKGROUND DESIGNS, HOLOGRAM AND OTHER SECURITY FEATURES NOT LISTED AND DO EXCEED DOCUMENT SECURITY INDUSTRY GUIDELINES

August 12, 2025	7.18 - 7.28 X 4.36 MM	Color Grade	1.39 CARAT	D	
IGI Report No I G771562646		Clarity Grade		VVS 2	
ROUND BRILLIANT		Cut Grade		EXCELLENT	
		Depth		60.5%	
		Table		55%	
		Girdle		Medium To Slightly Thick (Faceted)	
		Culet		Pointed	
		Polish		EXCELLENT	
		Symmetry		EXCELLENT	
		Fluorescence		NONE	
		Inscription(s)		1691 G7727562646	
		Comments:			
					Impurities: Very Fine Growth Diamond was created by Chemical Vapor Deposition (CVD) growth process.
					Type IIa