

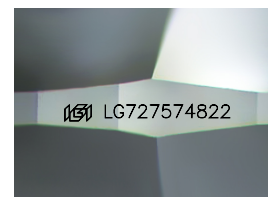
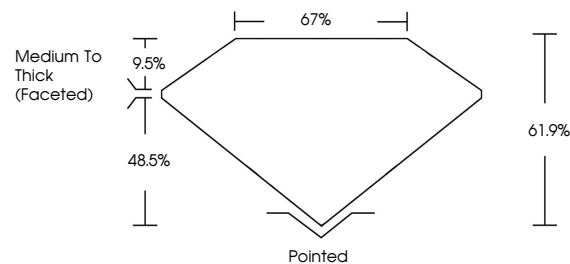


ELECTRONIC COPY

LABORATORY GROWN DIAMOND REPORT

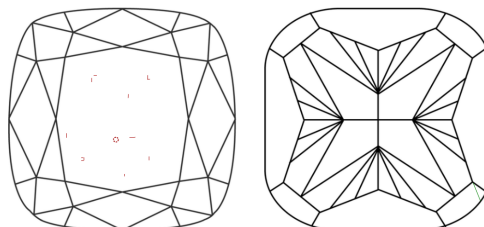
LG727574822
Report verification at lgi.org

PROPORTIONS



Sample Image Used

CLARITY CHARACTERISTICS



KEY TO SYMBOLS

Red symbols indicate internal characteristics.
Green symbols indicate external characteristics.

COLOR

D E F G H I J Faint Very Light Light

CLARITY

IF VWS¹⁻² VS¹⁻² SI¹⁻² I¹⁻³

Internally Flawless	Very Very Slightly Included	Very Slightly Included	Slightly Included	Included
------------------------	--------------------------------	---------------------------	----------------------	----------

LABORATORY GROWN DIAMOND REPORT



August 13, 2025

IGI Report Number **LG727574822**Description **LABORATORY GROWN DIAMOND**

Shape and Cutting Style **SQUARE CUSHION MODIFIED
BRILLIANT**

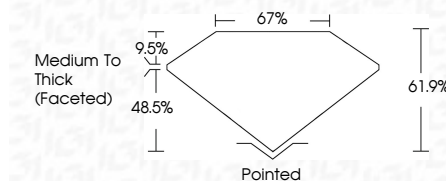
Measurements **6.03 X 5.78 X 3.58 MM**

GRADING RESULTS

Carat Weight 1.04 CARAT

Color Grade H

Clarity Grade VS 1



ADDITIONAL GRADING INFORMATION

Polish VERY GOOD

Symmetry VERY GOOD

Fluorescence **NONE**Inscription(s) LG727574822

Comments: This Laboratory Grown Diamond was created by Chemical Vapor Deposition (CVD) growth process.
Type IIa



© IGI 2020, International Gemological Institute

FD - 10 20

www.igi.org

THIS DOCUMENT WAS PRODUCED WITH THE FOLLOWING SECURITY MEASURES: SPECIAL DOCUMENT PAPER, INK SCREENS, WATERMARK BACKGROUND DESIGNS, HOLOGRAM AND OTHER SECURITY FEATURES NOT LISTED AND DO EXCEED DOCUMENT SECURITY INDUSTRY GUIDELINES

August 13, 2005	GI Report No. LG727574822	
SQUARE CUSHION MODIFIED BRILLIANT		
1.04 CARAT		
VS 1		
61.9%		
67%		
(Faceted)		
Medium to Thick		
Pointed		
VERY GOOD		
VERY GOOD		
NONE		
1681 LG727574822		

Comments:

The Laboratory Grown Diamond was
 analyzed by the Laboratory of Vapor Deposition
 (LVD) growth process.
 type IIG