



ELECTRONIC COPY

LG729523011
Report verification at igi.org



August 27, 2025

IGI Report Number **LG729523011**

Description **LABORATORY GROWN DIAMOND**

Shape and Cutting Style **PRINCESS CUT**

Measurements **7.79 X 7.76 X 5.51 MM**

GRADING RESULTS

Carat Weight **3.05 CARATS**

Color Grade **FANCY VIVID BLUE**

Clarity Grade **VS 1**

LABORATORY GROWN DIAMOND REPORT

August 27, 2025

IGI Report Number **LG729523011**

Description **LABORATORY GROWN DIAMOND**

Shape and Cutting Style **PRINCESS CUT**

Measurements **7.79 X 7.76 X 5.51 MM**

GRADING RESULTS

Carat Weight **3.05 CARATS**

Color Grade **FANCY VIVID BLUE**

Clarity Grade **VS 1**

ADDITIONAL GRADING INFORMATION

Polish **EXCELLENT**

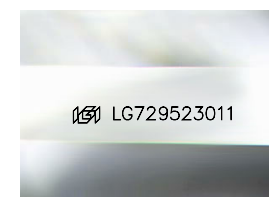
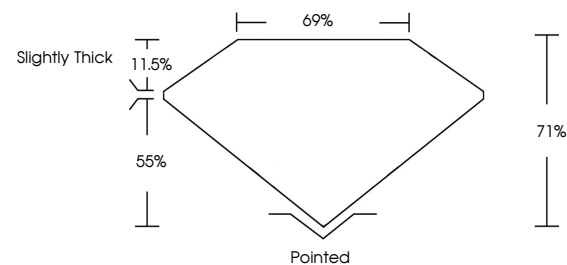
Symmetry **EXCELLENT**

Fluorescence **NONE**

Inscription(s) **IGI LG729523011**

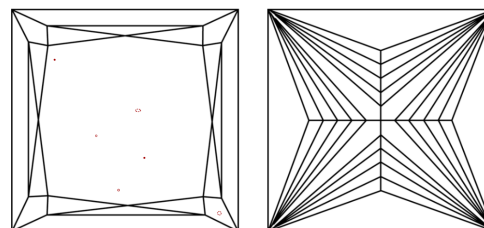
Comments: This Laboratory Grown Diamond was created by Chemical Vapor Deposition (CVD) growth process. Indications of post-growth treatment.

PROPORTIONS



Sample Image Used

CLARITY CHARACTERISTICS



KEY TO SYMBOLS

Red symbols indicate internal characteristics.
Green symbols indicate external characteristics.

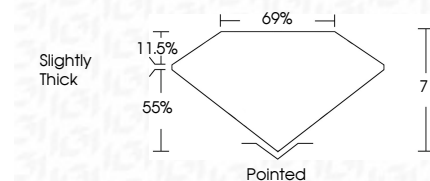
COLOR

D E F G H I J Faint Very Light Light

CLARITY

IF VS¹⁻² VS¹⁻² SI¹⁻² I¹⁻³

Internally Flawless Very Very Slightly Included Very Slightly Included Slightly Included Included



ADDITIONAL GRADING INFORMATION

Polish **EXCELLENT**

Symmetry **EXCELLENT**

Fluorescence **NONE**

Inscription(s) **IGI LG729523011**

Comments: This Laboratory Grown Diamond was created by Chemical Vapor Deposition (CVD) growth process. Indications of post-growth treatment.



IGI



August 27, 2025
IGI Report No LG729523011
PRINCESS CUT

3.05 CARATS
Carat Weight
FANCY VIVID BLUE
Color Grade

VS 1
Clarity Grade

7.79 X 7.76 X 5.51 MM
Depth
71%
69%
Girdle
Slightly Thick

Pointed
Culet
EXCELLENT
Polish
EXCELLENT
Symmetry
NONE
Fluorescence
IGI LG729523011
Inscription(s)

Comments: This Laboratory Grown Diamond was created by Chemical Vapor Deposition (CVD) growth process. Indications of post-growth treatment.