



**ELECTRONIC COPY**

## LABORATORY GROWN DIAMOND REPORT

February 14, 2023	
IGI Report Number	LGG1202403
Description	LABORATORY GROWN DIAMOND
Shape and Cutting Style	ROUND BRILLIANT
Measurements	9.86 - 9.90 X 6.09 MM

## GRADING RESULTS

Carat Weight	3.62 CARATS
Color Grade	D
Clarity Grade	VVS 2
Cut Grade	IDEAL

### ADDITIONAL GRADING INFORMATION

Polish	EXCELLENT
Symmetry	EXCELLENT
Fluorescence	NONE

Inscription(s) LABGROWN 131 LGG1202403

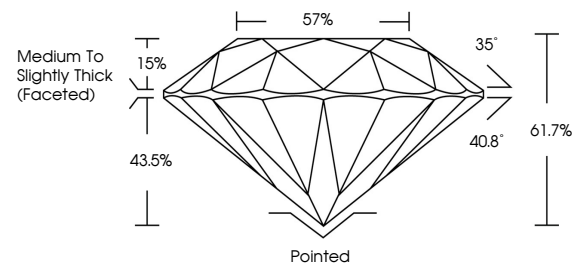
Comments: HEARTS & ARROWS  
As Grown - No indication of post-growth treatment.  
This Laboratory Grown Diamond was created by  
Chemical Vapor Deposition (CVD) growth process.

## LABORATORY GROWN DIAMOND REPORT

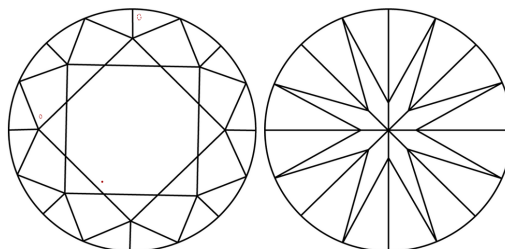
LGG1202403

Report verification at [igi.org](http://igi.org)

## PROPORTIONS

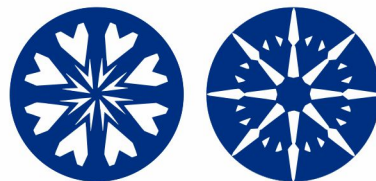


## CLARITY CHARACTERISTICS



### KEY TO SYMBOLS

Red symbols indicate internal characteristics.  
Green symbols indicate external characteristics.



**www.igi.org**

LABORATORY GROWN  
DIAMOND REPORT

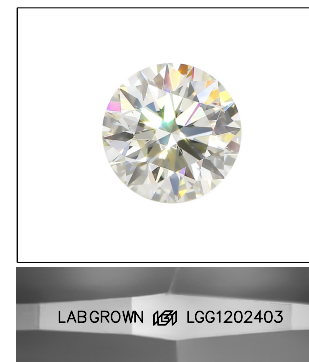
## GRADING SCALES

## CLARITY

IF	VVS <sup>1-2</sup>	VS <sup>1-2</sup>	SI <sup>1-2</sup>	I <sup>1-3</sup>
Internally Flawless	Very Very Slightly Included	Very Slightly Included	Slightly Included	Included

**COLOR**

D E F G H I J Faint Very Light Light

LASERSCRIBE<sup>SM</sup>

Sample Image Used



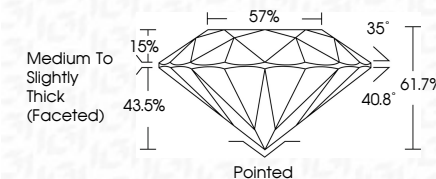
© IGI 2020, International Gemological Institute

FD - 10 20

LABORATORY GROWN DIAMOND REPORT

February 14, 2023	
IGI Report Number	LGG1202403
Description	LABORATORY GROWN DIAMOND
Shape and Cutting Style	ROUND BRILLIANT
Measurements	9.86 - 9.90 X 6.09 MM

GRADING RESULTS	
Carat Weight	3.62 CARATS
Color Grade	D
Clarity Grade	VVS 2
Cut Grade	IDEAL



### ADDITIONAL GRADING INFORMATION

Polish	EXCELLENT
Symmetry	EXCELLENT
Fluorescence	NONE
Inscription(s)	LABGROWN (5) LGG1202403

Comments: HEARTS & ARROWS  
As Grown - No indication of post-growth treatment.  
This Laboratory Grown Diamond was created by  
Chemical Vapor Deposition (CVD) growth process.



February 14, 2023  
IGI Report No LGG1202403  
ROUND BRILLIANT

9.86 - 9.90 X 4.09 MM		3.62 CARATS	
Carat Weight	Color Grade	D	
	Clarity Grade	VS 2	
	Cut Grade	IDEAL	
	Depth	61.7%	
	Table	57%	
	Grade	Medium to Slightly Thick (Faceted)	
Culet	Polish	Pointed	
Symmetry	Fluorescence	EXCELLENT	
Inscription(s)		EXCELLENT	
		NONE	
		LABGROWN (G)	

**Comments:**  
HEARTS & ARROWS  
As Grown - No Indication  
treatment.  
This Laboratory Growth  
created by Chemical  
(CVM) growth process